



# ME3 Monoclonal Antibody

<b>Catalog No</b>	YP-mAb-02674
<b>Isotype</b>	IgG
<b>Reactivity</b>	Human;Mouse
<b>Applications</b>	WB
<b>Gene Name</b>	ME3
<b>Protein Name</b>	NADP-dependent malic enzyme mitochondrial
<b>Immunogen</b>	The antiserum was produced against synthesized peptide derived from human ME3. AA range:545-594
<b>Specificity</b>	ME3 Monoclonal Antibody detects endogenous levels of ME3 protein.
<b>Formulation</b>	Liquid in PBS containing 50% glycerol, 0.5% BSA and 0.02% sodium azide.
<b>Source</b>	Monoclonal, Mouse,IgG
<b>Purification</b>	The antibody was affinity-purified from mouse antiserum by affinity-chromatography using epitope-specific immunogen.
<b>Dilution</b>	WB 1:500-1:2000
<b>Concentration</b>	1 mg/ml
<b>Purity</b>	≥90%
<b>Storage Stability</b>	-20°C/1 year
<b>Synonyms</b>	ME3; NADP-dependent malic enzyme; mitochondrial; NADP-ME; Malic enzyme 3
<b>Observed Band</b>	67kD
<b>Cell Pathway</b>	Mitochondrion matrix.
<b>Tissue Specificity</b>	Expressed predominantly in organs with a low-division rate.
<b>Function</b>	catalytic activity:(S)-malate + NADP(+) = pyruvate + CO(2) + NADPH.,cofactor:Divalent metal cations. Prefers magnesium or manganese.,similarity:Belongs to the malic enzymes family.,tissue specificity:Expressed predominantly in organs with a low-division rate.,
<b>Background</b>	Malic enzyme catalyzes the oxidative decarboxylation of malate to pyruvate using either NAD <sup>+</sup> or NADP <sup>+</sup> as a cofactor. Mammalian tissues contain 3 distinct isoforms of malic enzyme: a cytosolic NADP(+)-dependent isoform, a mitochondrial NADP(+)-dependent isoform, and a mitochondrial NAD(+)-dependent isoform. This gene encodes a mitochondrial NADP(+)-dependent isoform. Multiple alternatively spliced transcript variants have been found for this gene, but the biological validity of some variants has not been determined. [provided by RefSeq, Jul 2008],



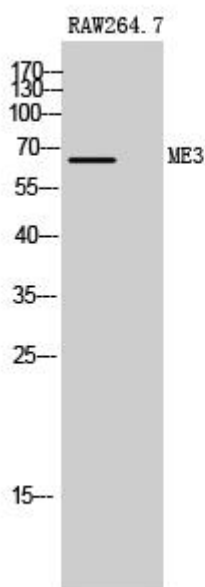
**matters needing attention**

Avoid repeated freezing and thawing!

**Usage suggestions**

This product can be used in immunological reaction related experiments. For more information, please consult technical personnel.

**Products Images**



Western Blot analysis of various cells using ME3 Monoclonal Antibody