



# LYPLA1 Monoclonal Antibody

<b>Catalog No</b>	YP-mAb-02664
<b>Isotype</b>	IgG
<b>Reactivity</b>	Human;Mouse;Rat
<b>Applications</b>	WB
<b>Gene Name</b>	LYPLA1
<b>Protein Name</b>	Acyl-protein thioesterase 1
<b>Immunogen</b>	The antiserum was produced against synthesized peptide derived from human LYPLA1. AA range:51-100
<b>Specificity</b>	LYPLA1 Monoclonal Antibody detects endogenous levels of LYPLA1 protein.
<b>Formulation</b>	Liquid in PBS containing 50% glycerol, 0.5% BSA and 0.02% sodium azide.
<b>Source</b>	Monoclonal, Mouse,IgG
<b>Purification</b>	The antibody was affinity-purified from mouse antiserum by affinity-chromatography using epitope-specific immunogen.
<b>Dilution</b>	WB 1:500-1:2000
<b>Concentration</b>	1 mg/ml
<b>Purity</b>	≥90%
<b>Storage Stability</b>	-20°C/1 year
<b>Synonyms</b>	LYPLA1; APT1; LPL1; Acyl-protein thioesterase 1; APT-1; hAPT1; Lysophospholipase 1; Lysophospholipase I; LPL-I; LysoPLA I
<b>Observed Band</b>	25kD
<b>Cell Pathway</b>	Cytoplasm . Cell membrane . Nucleus membrane . Endoplasmic reticulum . Shows predominantly a cytoplasmic localization with a weak expression in the cell membrane, nuclear membrane and endoplasmic reticulum. .
<b>Tissue Specificity</b>	Platelets.
<b>Function</b>	catalytic activity:Palmitoyl-protein + H(2)O = palmitate + protein.,function:Hydrolyzes fatty acids from S-acylated cysteine residues in proteins such as trimeric G alpha proteins or HRAS. Also has low lysophospholipase activity.,similarity:Belongs to the AB hydrolase 2 family.,subunit:Homodimer.,
<b>Background</b>	This gene encodes a member of the alpha/beta hydrolase superfamily. The encoded protein functions as a homodimer, exhibiting both depalmitoylating as well as lysophospholipase activity, and may be involved in Ras localization and signaling. Alternate splicing results in multiple transcript variants. Pseudogenes of this gene have been defined on chromosomes 4, 6, and 7. [provided by RefSeq, Jul 2013],



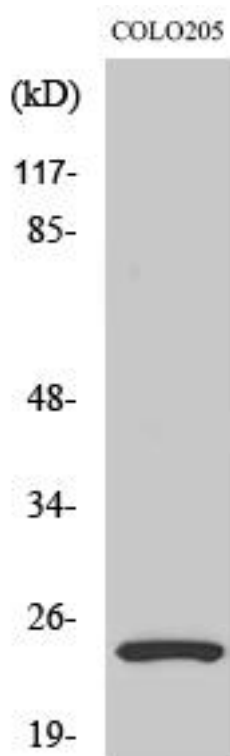
**matters needing attention**

Avoid repeated freezing and thawing!

**Usage suggestions**

This product can be used in immunological reaction related experiments. For more information, please consult technical personnel.

**Products Images**



Western Blot analysis of various cells using LYPLA1 Monoclonal Antibody