

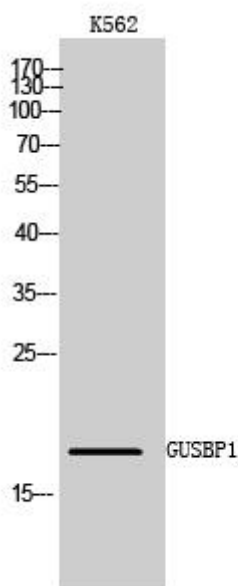


# GUSBP1 Monoclonal Antibody

<b>Catalog No</b>	YP-mAb-02650
<b>Isotype</b>	IgG
<b>Reactivity</b>	Human;Rat;Mouse;
<b>Applications</b>	WB
<b>Gene Name</b>	GUSBP1
<b>Protein Name</b>	Putative beta-glucuronidase-like protein SMA3
<b>Immunogen</b>	The antiserum was produced against synthesized peptide derived from human GUSBL1. AA range:51-100
<b>Specificity</b>	GUSBP1 Monoclonal Antibody detects endogenous levels of GUSBP1 protein.
<b>Formulation</b>	Liquid in PBS containing 50% glycerol, 0.5% BSA and 0.02% sodium azide.
<b>Source</b>	Monoclonal, Mouse,IgG
<b>Purification</b>	The antibody was affinity-purified from mouse antiserum by affinity-chromatography using epitope-specific immunogen.
<b>Dilution</b>	WB 1:500-1:2000
<b>Concentration</b>	1 mg/ml
<b>Purity</b>	≥90%
<b>Storage Stability</b>	-20°C/1 year
<b>Synonyms</b>	GUSBP1; SMA3; Putative beta-glucuronidase-like protein SMA3
<b>Observed Band</b>	18kD
<b>Cell Pathway</b>	
<b>Tissue Specificity</b>	Ubiquitous.
<b>Function</b>	skeletal system development,
<b>Background</b>	Binds GTP, GDP and GMP.
<b>matters needing attention</b>	Avoid repeated freezing and thawing!
<b>Usage suggestions</b>	This product can be used in immunological reaction related experiments. For more information, please consult technical personnel.



## Products Images



Western Blot analysis of various cells using GUSBP1 Monoclonal Antibody