



FX Monoclonal Antibody

Catalog No	YP-mAb-02637
Isotype	IgG
Reactivity	Human;Mouse;Rat
Applications	WB
Gene Name	TSTA3
Protein Name	GDP-L-fucose synthase
Immunogen	The antiserum was produced against synthesized peptide derived from human TSTA3. AA range:221-270
Specificity	FX Monoclonal Antibody detects endogenous levels of FX protein.
Formulation	Liquid in PBS containing 50% glycerol, 0.5% BSA and 0.02% sodium azide.
Source	Monoclonal, Mouse,IgG
Purification	The antibody was affinity-purified from mouse antiserum by affinity-chromatography using epitope-specific immunogen.
Dilution	WB 1:500-1:2000
Concentration	1 mg/ml
Purity	≥90%
Storage Stability	-20°C/1 year
Synonyms	TSTA3; SDR4E1; GDP-L-fucose synthase; GDP-4-keto-6-deoxy-D-mannose-3; 5-epimerase-4-reductase; Protein FX; Red cell NADP(H)-binding protein; Short-chain dehydrogenase/reductase family 4E member 1
Observed Band	40kD
Cell Pathway	cytoplasm,cytosol,extracellular exosome,
Tissue Specificity	Erythrocyte,Lung,Placenta,Skin,
Function	catalytic activity:GDP-L-fucose + NADP(+) = GDP-4-dehydro-6-deoxy-D-mannose + NADPH.,function:Two step NADP-dependent conversion of GDP-4-dehydro-6-deoxy-D-mannose to GDP-fucose, involving an epimerase and a reductase reaction.,pathway:Nucleotide-sugar biosynthesis; GDP-L-fucose biosynthesis via de novo pathway; GDP-L-fucose from GDP-D-mannose: step 2/2.,similarity:Belongs to the fucose synthetase family.,subunit:Homodimer.,
Background	Tissue specific transplantation antigen P35B is a NADP(H)-binding protein. It catalyze the two-step epimerase and the reductase reactions in GDP-D-mannose metabolism, converting GDP-4-keto-6-D-deoxymannose to GDP-L-fucose. GDP-L-fucose is the substrate of several fucosyltransferases involved in the expression of many glycoconjugates, including blood group ABH antigens and



developmental adhesion antigens. Mutations in this gene may cause leukocyte adhesion deficiency, type II. [provided by RefSeq, Jul 2008],

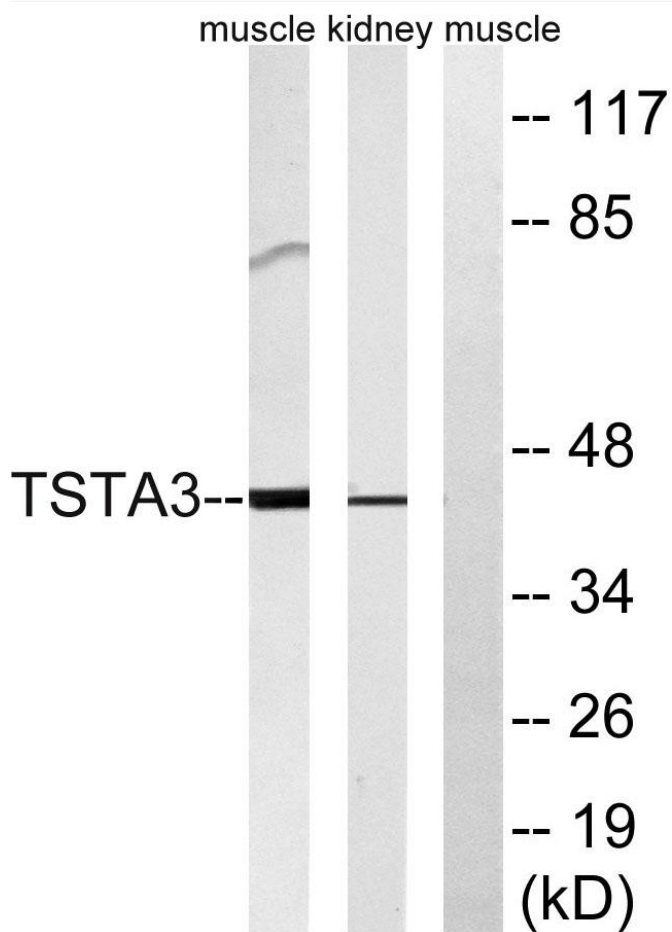
matters needing attention

Avoid repeated freezing and thawing!

Usage suggestions

This product can be used in immunological reaction related experiments. For more information, please consult technical personnel.

Products Images



Western Blot analysis of various cells using FX Monoclonal Antibody