

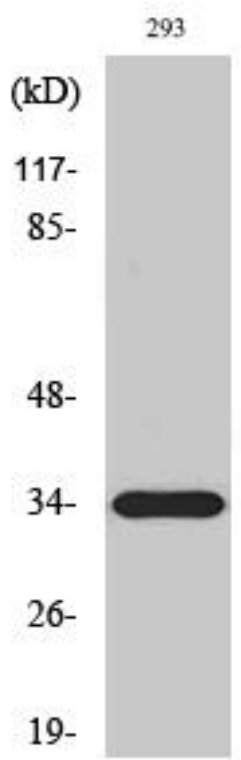


# ELOVL6 Monoclonal Antibody

<b>Catalog No</b>	YP-mAb-02631
<b>Isotype</b>	IgG
<b>Reactivity</b>	Human;Mouse;Rat
<b>Applications</b>	WB
<b>Gene Name</b>	ELOVL6
<b>Protein Name</b>	Elongation of very long chain fatty acids protein 6
<b>Immunogen</b>	The antiserum was produced against synthesized peptide derived from human ELOVL6. AA range:21-70
<b>Specificity</b>	ELOVL6 Monoclonal Antibody detects endogenous levels of ELOVL6 protein.
<b>Formulation</b>	Liquid in PBS containing 50% glycerol, 0.5% BSA and 0.02% sodium azide.
<b>Source</b>	Monoclonal, Mouse,IgG
<b>Purification</b>	The antibody was affinity-purified from mouse antiserum by affinity-chromatography using epitope-specific immunogen.
<b>Dilution</b>	WB 1:500-1:2000
<b>Concentration</b>	1 mg/ml
<b>Purity</b>	≥90%
<b>Storage Stability</b>	-20°C/1 year
<b>Synonyms</b>	ELOVL6; FACE; LCE; Elongation of very long chain fatty acids protein 6; 3-keto acyl-CoA synthase ELOVL6; ELOVL fatty acid elongase 6; ELOVL FA elongase 6; Fatty acid elongase 2; hELO2; Fatty acyl-CoA elongase; Long-chain fatty-acyl elongase
<b>Observed Band</b>	35kD
<b>Cell Pathway</b>	Endoplasmic reticulum membrane ; Multi-pass membrane protein .
<b>Tissue Specificity</b>	Ubiquitous.
<b>Function</b>	function:Fatty acid elongase specific to C12-C16 saturated and monoinsaturated fatty acids.,similarity:Belongs to the ELO family.,
<b>Background</b>	Fatty acid elongases (EC 6.2.1.3), such as ELOVL6, use malonyl-CoA as a 2-carbon donor in the first and rate-limiting step of fatty acid elongation (Moon et al., 2001 [PubMed 11567032]).[supplied by OMIM, Mar 2008],
<b>matters needing attention</b>	Avoid repeated freezing and thawing!

**Usage suggestions**

This product can be used in immunological reaction related experiments. For more information, please consult technical personnel.

**Products Images**

Western Blot analysis of various cells using ELOVL6 Monoclonal Antibody