



# CYP2A13 Monoclonal Antibody

<b>Catalog No</b>	YP-mAb-02575
<b>Isotype</b>	IgG
<b>Reactivity</b>	Human;Rat;Mouse;
<b>Applications</b>	WB
<b>Gene Name</b>	CYP2A13
<b>Protein Name</b>	Cytochrome P450 2A13
<b>Immunogen</b>	The antiserum was produced against synthesized peptide derived from human Cytochrome P450 2A13. AA range:311-360
<b>Specificity</b>	CYP2A13 Monoclonal Antibody detects endogenous levels of CYP2A13 protein.
<b>Formulation</b>	Liquid in PBS containing 50% glycerol, 0.5% BSA and 0.02% sodium azide.
<b>Source</b>	Monoclonal, Mouse,IgG
<b>Purification</b>	The antibody was affinity-purified from mouse antiserum by affinity-chromatography using epitope-specific immunogen.
<b>Dilution</b>	WB 1:500-1:2000
<b>Concentration</b>	1 mg/ml
<b>Purity</b>	≥90%
<b>Storage Stability</b>	-20°C/1 year
<b>Synonyms</b>	CYP2A13; Cytochrome P450 2A13; CYP11A13
<b>Observed Band</b>	56kD
<b>Cell Pathway</b>	Endoplasmic reticulum membrane; Peripheral membrane protein. Microsome membrane; Peripheral membrane protein.
<b>Tissue Specificity</b>	Expressed in liver and a number of extrahepatic tissues, including nasal mucosa, lung, trachea, brain, mammary gland, prostate, testis, and uterus, but not in heart, kidney, bone marrow, colon, small intestine, spleen, stomach, thymus, or skeletal muscle.
<b>Function</b>	catalytic activity:RH + reduced flavoprotein + O(2) = ROH + oxidized flavoprotein + H(2)O.,cofactor:Heme group.,function:Exhibits a coumarin 7-hydroxylase activity. Active in the metabolic activation of hexamethylphosphoramide, N,N-dimethylaniline, 2'-methoxyacetophenone, N-nitrosomethylphenylamine, and the tobacco-specific carcinogen, 4-(methylnitrosamino)-1-(3-pyridyl)-1-butanone.,online information:CYP2A13 alleles.polymorphism:The frequencies of the Cys-257 allele in white, black, Hispanic, and Asian individuals are 1.9%, 14.4%, 5.8%, and 7.7%, respectively. The Cys-257 variant is 37 to 56% less active than the wild-type Arg-257 protein toward all substrates tested.,similarity:Belongs to the cytochrome P450 family.,tissue specificity:Expressed in liver and a number of extrahepatic tissues, including nasal mucosa, lung, trachea, brain, mammary gland, prostate, testis, and uterus, but n



## Background

cytochrome P450 family 2 subfamily A member 13(CYP2A13) Homo sapiens  
This gene encodes a member of the cytochrome P450 superfamily of enzymes. The cytochrome P450 proteins are monooxygenases which catalyze many reactions involved in drug metabolism and synthesis of cholesterol, steroids and other lipids. This protein localizes to the endoplasmic reticulum. Although its endogenous substrate has not been determined, it is known to metabolize 4-(methylnitrosamino)-1-(3-pyridyl)-1-butanone, a major nitrosamine specific to tobacco. This gene is part of a large cluster of cytochrome P450 genes from the CYP2A, CYP2B and CYP2F subfamilies on chromosome 19q. [provided by RefSeq, Jul 2008],

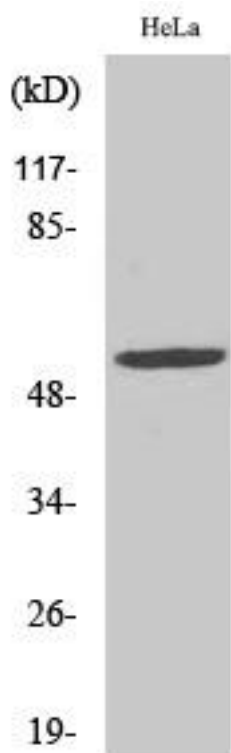
## matters needing attention

Avoid repeated freezing and thawing!

## Usage suggestions

This product can be used in immunological reaction related experiments. For more information, please consult technical personnel.

## Products Images



Western Blot analysis of various cells using CYP2A13 Monoclonal Antibody