



# CYP26A1 Monoclonal Antibody

<b>Catalog No</b>	YP-mAb-02571
<b>Isotype</b>	IgG
<b>Reactivity</b>	Human;Mouse;Rat
<b>Applications</b>	WB
<b>Gene Name</b>	CYP26A1
<b>Protein Name</b>	Cytochrome P450 26A1
<b>Immunogen</b>	The antiserum was produced against synthesized peptide derived from human Cytochrome P450 26A1. AA range:251-300
<b>Specificity</b>	CYP26A1 Monoclonal Antibody detects endogenous levels of CYP26A1 protein.
<b>Formulation</b>	Liquid in PBS containing 50% glycerol, 0.5% BSA and 0.02% sodium azide.
<b>Source</b>	Monoclonal, Mouse,IgG
<b>Purification</b>	The antibody was affinity-purified from mouse antiserum by affinity-chromatography using epitope-specific immunogen.
<b>Dilution</b>	WB 1:500-1:2000
<b>Concentration</b>	1 mg/ml
<b>Purity</b>	≥90%
<b>Storage Stability</b>	-20°C/1 year
<b>Synonyms</b>	CYP26A1; CYP26; P450RAI1; Cytochrome P450 26A1; Cytochrome P450 retinoic acid-inactivating 1; Cytochrome P450RAI; hP450RAI; Retinoic acid 4-hydroxylase; Retinoic acid-metabolizing cytochrome
<b>Observed Band</b>	56kD
<b>Cell Pathway</b>	Endoplasmic reticulum membrane ; Peripheral membrane protein. Microsome membrane ; Peripheral membrane protein.
<b>Tissue Specificity</b>	Expressed in most fetal and adult tissues with highest levels in adult liver, heart, pituitary gland, adrenal gland, placenta and regions of the brain (PubMed:9826557). Expressed at high levels in lung, pancreas, skin and uterus (at protein level) (PubMed:22020119). Lower expression level is detected in spleen, kidney, intestine and adipose tissue (at protein level) (PubMed:22020119).
<b>Function</b>	cofactor:Heme group.,function:Plays a key role in retinoic acid metabolism. Acts on retinoids, including all-trans-retinoic acid (RA) and its stereoisomer 9-cis-RA. CaMABLE of both 4-hydroxylation and 18-hydroxylation. Responsible for generation of several hydroxylated forms of RA, including 4-OH-RA, 4-oxo-RA and 18-OH-RA.,induction:By retinoic acid.,similarity:Belongs to the cytochrome P450 family.,tissue specificity:Highest levels in adult liver, heart, pituitary gland, adrenal gland, placenta and regions of the brain.,



## Background

cytochrome P450 family 26 subfamily A member 1(CYP26A1) Homo sapiens  
This gene encodes a member of the cytochrome P450 superfamily of enzymes. The cytochrome P450 proteins are monooxygenases which catalyze many reactions involved in drug metabolism and synthesis of cholesterol, steroids and other lipids. This endoplasmic reticulum protein acts on retinoids, including all-trans-retinoic acid (RA), with both 4-hydroxylation and 18-hydroxylation activities. This enzyme regulates the cellular level of retinoic acid which is involved in regulation of gene expression in both embryonic and adult tissues. Two alternatively spliced transcript variants of this gene, which encode the distinct isoforms, have been reported. [provided by RefSeq, Jul 2008],

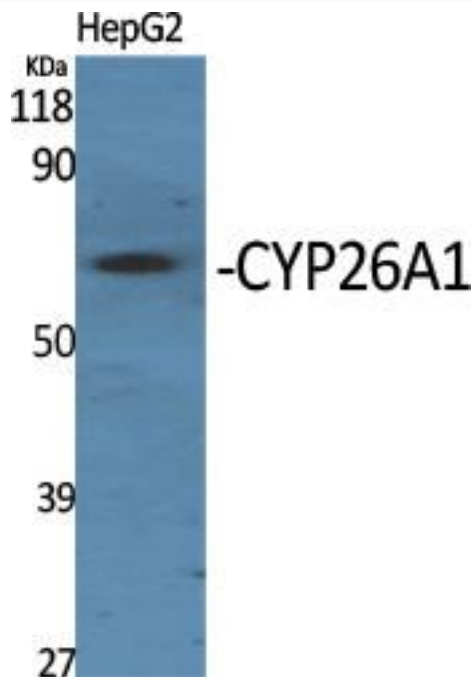
## matters needing attention

Avoid repeated freezing and thawing!

## Usage suggestions

This product can be used in immunological reaction related experiments. For more information, please consult technical personnel.

## Products Images



Western Blot analysis of various cells using CYP26A1 Monoclonal Antibody