



# COX6c Monoclonal Antibody

<b>Catalog No</b>	YP-mAb-02548
<b>Isotype</b>	IgG
<b>Reactivity</b>	Human;Mouse;Rat
<b>Applications</b>	WB
<b>Gene Name</b>	COX6C
<b>Protein Name</b>	Cytochrome c oxidase subunit 6C
<b>Immunogen</b>	The antiserum was produced against synthesized peptide derived from human COX6C. AA range:11-60
<b>Specificity</b>	COX6c Monoclonal Antibody detects endogenous levels of COX6c protein.
<b>Formulation</b>	Liquid in PBS containing 50% glycerol, 0.5% BSA and 0.02% sodium azide.
<b>Source</b>	Monoclonal, Mouse,IgG
<b>Purification</b>	The antibody was affinity-purified from mouse antiserum by affinity-chromatography using epitope-specific immunogen.
<b>Dilution</b>	WB 1:500-1:2000
<b>Concentration</b>	1 mg/ml
<b>Purity</b>	≥90%
<b>Storage Stability</b>	-20°C/1 year
<b>Synonyms</b>	COX6C; Cytochrome c oxidase subunit 6C; Cytochrome c oxidase polypeptide VIc
<b>Observed Band</b>	32kD
<b>Cell Pathway</b>	Mitochondrion inner membrane ; Single-pass membrane protein .
<b>Tissue Specificity</b>	Eye,
<b>Function</b>	function:This protein is one of the nuclear-coded polypeptide chains of cytochrome c oxidase, the terminal oxidase in mitochondrial electron transport.,similarity:Belongs to the cytochrome c oxidase subunit 6c family.,
<b>Background</b>	Cytochrome c oxidase, the terminal enzyme of the mitochondrial respiratory chain, catalyzes the electron transfer from reduced cytochrome c to oxygen. It is a heteromeric complex consisting of 3 catalytic subunits encoded by mitochondrial genes and multiple structural subunits encoded by nuclear genes. The mitochondrially-encoded subunits function in electron transfer, and the nuclear-encoded subunits may be involved in the regulation and assembly of the complex. This nuclear gene encodes subunit VIc, which has 77% amino acid sequence identity with mouse subunit VIc. This gene is up-regulated in prostate cancer cells. A pseudogene has been found on chromosomes 16p12. [provided by RefSeq, Jul 2010],



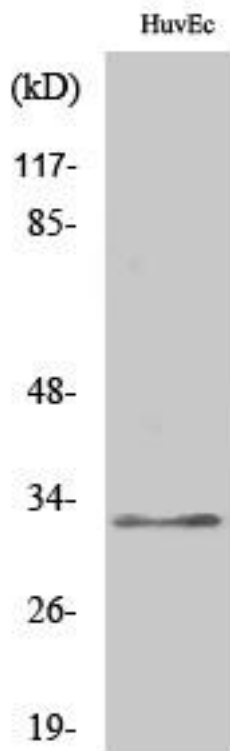
**matters needing attention**

Avoid repeated freezing and thawing!

**Usage suggestions**

This product can be used in immunological reaction related experiments. For more information, please consult technical personnel.

**Products Images**



Western Blot analysis of various cells using COX6c Monoclonal Antibody