

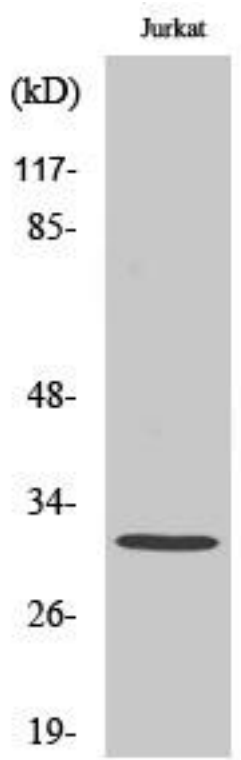


Carbonyl Reductase 3 Monoclonal Antibody

Catalog No	YP-mAb-02526
Isotype	IgG
Reactivity	Human;Mouse;Rat
Applications	WB
Gene Name	CBR3
Protein Name	Carbonyl reductase [NADPH] 3
Immunogen	The antiserum was produced against synthesized peptide derived from human CBR3. AA range:151-200
Specificity	Carbonyl Reductase 3 Monoclonal Antibody detects endogenous levels of Carbonyl Reductase 3 protein.
Formulation	Liquid in PBS containing 50% glycerol, 0.5% BSA and 0.02% sodium azide.
Source	Monoclonal, Mouse,IgG
Purification	The antibody was affinity-purified from mouse antiserum by affinity-chromatography using epitope-specific immunogen.
Dilution	WB 1:500-1:2000
Concentration	1 mg/ml
Purity	≥90%
Storage Stability	-20°C/1 year
Synonyms	CBR3; Carbonyl reductase [NADPH] 3; NADPH-dependent carbonyl reductase 3
Observed Band	31kD
Cell Pathway	Cytoplasm .
Tissue Specificity	Detected in ovary, pancreas, intestine, colon, kidney, brain, thymus, lung, heart, liver, spleen, leukocyte, prostate and testis.
Function	catalytic activity:R-CHOH-R' + NADP(+) = R-CO-R' + NADPH.,similarity:Belongs to the short-chain dehydrogenases/reductases (SDR) family.,
Background	Carbonyl reductase 3 catalyzes the reduction of a large number of biologically and pharmacologically active carbonyl compounds to their corresponding alcohols. The enzyme is classified as a monomeric NADPH-dependent oxidoreductase. CBR3 contains three exons spanning 11.2 kilobases and is closely linked to another carbonyl reductase gene - CBR1. [provided by RefSeq, Jul 2008],
matters needing attention	Avoid repeated freezing and thawing!

**Usage suggestions**

This product can be used in immunological reaction related experiments. For more information, please consult technical personnel.

Products Images

Western Blot analysis of various cells using Carbonyl Reductase 3 Monoclonal Antibody