



Calpain 12 Monoclonal Antibody

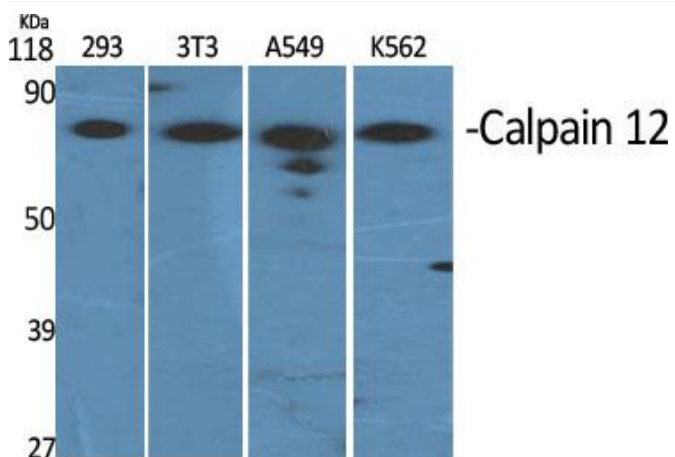
Catalog No	YP-mAb-02522
Isotype	IgG
Reactivity	Human;Rat;Mouse;
Applications	WB
Gene Name	CAPN12
Protein Name	Calpain-12
Immunogen	The antiserum was produced against synthesized peptide derived from human CAPN12. AA range:221-270
Specificity	Calpain 12 Monoclonal Antibody detects endogenous levels of Calpain 12 protein.
Formulation	Liquid in PBS containing 50% glycerol, 0.5% BSA and 0.02% sodium azide.
Source	Monoclonal, Mouse,IgG
Purification	The antibody was affinity-purified from mouse antiserum by affinity-chromatography using epitope-specific immunogen.
Dilution	WB 1:500-1:2000
Concentration	1 mg/ml
Purity	≥90%
Storage Stability	-20°C/1 year
Synonyms	CAPN12; Calpain-12; Calcium-activated neutral proteinase 12; CANP 12
Observed Band	80kD
Cell Pathway	intracellular,cytoplasm,
Tissue Specificity	Thalamus,
Function	catalytic activity:Broad endopeptidase specificity.,function:Calcium-regulated non-lysosomal thiol-protease.,similarity:Belongs to the peptidase C2 family.,similarity:Contains 1 calpain catalytic domain.,similarity:Contains 1 EF-hand domain.,
Background	The calpains, calcium-activated neutral proteases, are nonlysosomal, intracellular cysteine proteases. The mammalian calpains include ubiquitous, stomach-specific, and muscle-specific proteins. The ubiquitous enzymes consist of heterodimers with distinct large, catalytic subunits associated with a common small, regulatory subunit. This gene encodes a member of the calpain large subunit family. [provided by RefSeq, Jun 2012],
matters needing attention	Avoid repeated freezing and thawing!



Usage suggestions

This product can be used in immunological reaction related experiments. For more information, please consult technical personnel.

Products Images



Western Blot analysis of various cells using Calpain 12 Monoclonal Antibody