



Calpain 11 Monoclonal Antibody

| | |
|---------------------------|---|
| Catalog No | YP-mAb-02521 |
| Isotype | IgG |
| Reactivity | Human;Rat;Mouse; |
| Applications | WB |
| Gene Name | CAPN11 |
| Protein Name | Calpain-11 |
| Immunogen | The antiserum was produced against synthesized peptide derived from human CAPN11. AA range:401-450 |
| Specificity | Calpain 11 Monoclonal Antibody detects endogenous levels of Calpain 11 protein. |
| Formulation | Liquid in PBS containing 50% glycerol, 0.5% BSA and 0.02% sodium azide. |
| Source | Monoclonal, Mouse,IgG |
| Purification | The antibody was affinity-purified from mouse antiserum by affinity-chromatography using epitope-specific immunogen. |
| Dilution | WB 1:500-1:2000 |
| Concentration | 1 mg/ml |
| Purity | ≥90% |
| Storage Stability | -20°C/1 year |
| Synonyms | CAPN11; Calpain-11; Calcium-activated neutral proteinase 11; CANP 11 |
| Observed Band | 81kD |
| Cell Pathway | Cytoplasmic vesicle, secretory vesicle, acrosome . |
| Tissue Specificity | Highest expression in testis. |
| Function | catalytic activity:Broad endopeptidase specificity.,function:Calcium-regulated non-lysosomal thiol-protease which catalyzes limited proteolysis of substrates involved in cytoskeletal remodeling and signal transduction.,similarity:Belongs to the peptidase C2 family.,similarity:Contains 1 calpain catalytic domain.,similarity:Contains 2 EF-hand domains.,subunit:Heterodimer of a large (catalytic) and a small (regulatory) subunit.,tissue specificity:Highest expression in testis., |
| Background | Calpains constitute a family of intracellular calcium-dependent cysteine proteases. There are eight members in this superfamily. They consist of a variable 80 kDa subunit and an invariant 30 kDa subunit. This calpain protein appears to have protease activity and calcium-binding ability. A similar mouse protein may play a functional role in spermatogenesis and in the regulation of calcium-dependent signal transduction events during meiosis. [provided by RefSeq, Dec 2008], |



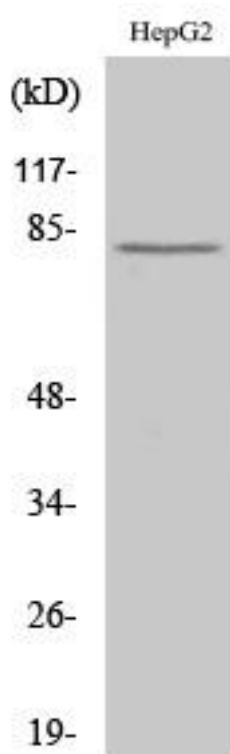
matters needing attention

Avoid repeated freezing and thawing!

Usage suggestions

This product can be used in immunological reaction related experiments. For more information, please consult technical personnel.

Products Images



Western Blot analysis of various cells using Calpain 11 Monoclonal Antibody