

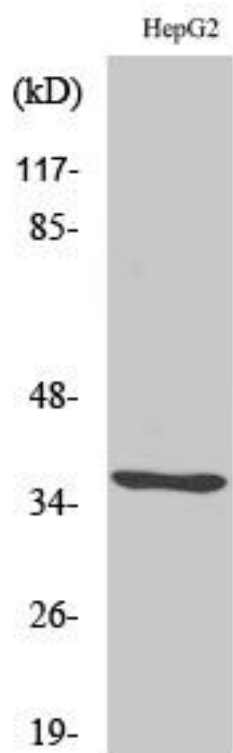


# CA VI Monoclonal Antibody

<b>Catalog No</b>	YP-mAb-02515
<b>Isotype</b>	IgG
<b>Reactivity</b>	Human
<b>Applications</b>	WB
<b>Gene Name</b>	CA6
<b>Protein Name</b>	Carbonic anhydrase 6
<b>Immunogen</b>	The antiserum was produced against synthesized peptide derived from human CA6. AA range:231-280
<b>Specificity</b>	CA VI Monoclonal Antibody detects endogenous levels of CA VI protein.
<b>Formulation</b>	Liquid in PBS containing 50% glycerol, 0.5% BSA and 0.02% sodium azide.
<b>Source</b>	Monoclonal, Mouse,IgG
<b>Purification</b>	The antibody was affinity-purified from mouse antiserum by affinity-chromatography using epitope-specific immunogen.
<b>Dilution</b>	WB 1:500-1:2000
<b>Concentration</b>	1 mg/ml
<b>Purity</b>	≥90%
<b>Storage Stability</b>	-20°C/1 year
<b>Synonyms</b>	CA6; Carbonic anhydrase 6; Carbonate dehydratase VI; Carbonic anhydrase VI; CA-VI; Salivary carbonic anhydrase; Secreted carbonic anhydrase
<b>Observed Band</b>	35kD
<b>Cell Pathway</b>	Secreted.
<b>Tissue Specificity</b>	Major constituent of saliva.
<b>Function</b>	catalytic activity:H(2)CO(3) = CO(2) + H(2)O.,cofactor:Zinc.,function:Reversible hydration of carbon dioxide. Its role in saliva is unknown.,similarity:Belongs to the alpha-carbonic anhydrase family.,tissue specificity:Major constituent of saliva.,
<b>Background</b>	The protein encoded by this gene is one of several isozymes of carbonic anhydrase. This protein is found only in salivary glands and saliva and protein may play a role in the reversible hydration of carbon dioxide though its function in saliva is unknown. [provided by RefSeq, Jul 2008],
<b>matters needing attention</b>	Avoid repeated freezing and thawing!
<b>Usage suggestions</b>	This product can be used in immunological reaction related experiments. For more information, please consult technical personnel.



## Products Images



Western Blot analysis of various cells using CA VI Monoclonal Antibody