



# BCKDK Monoclonal Antibody

<b>Catalog No</b>	YP-mAb-02508
<b>Isotype</b>	IgG
<b>Reactivity</b>	Human;Mouse;Rat
<b>Applications</b>	WB
<b>Gene Name</b>	BCKDK
<b>Protein Name</b>	[3-methyl-2-oxobutanoate dehydrogenase [lipoamide]] kinase mitochondrial
<b>Immunogen</b>	The antiserum was produced against synthesized peptide derived from human BCKD . AA range:11-60
<b>Specificity</b>	BCKDK Monoclonal Antibody detects endogenous levels of BCKDK protein.
<b>Formulation</b>	Liquid in PBS containing 50% glycerol, 0.5% BSA and 0.02% sodium azide.
<b>Source</b>	Monoclonal, Mouse,IgG
<b>Purification</b>	The antibody was affinity-purified from mouse antiserum by affinity-chromatography using epitope-specific immunogen.
<b>Dilution</b>	WB 1:500-1:2000
<b>Concentration</b>	1 mg/ml
<b>Purity</b>	≥90%
<b>Storage Stability</b>	-20°C/1 year
<b>Synonyms</b>	BCKDK; [3-methyl-2-oxobutanoate dehydrogenase [lipoamide]] kinase; mitochondrial; Branched-chain alpha-ketoacid dehydrogenase kinase; BCKD-kinase; BCKDHKIN
<b>Observed Band</b>	46kD
<b>Cell Pathway</b>	Mitochondrion matrix. Mitochondrion .
<b>Tissue Specificity</b>	Ubiquitous.
<b>Function</b>	catalytic activity:ATP + [3-methyl-2-oxobutanoate dehydrogenase (acetyl-transferring)] = ADP + [3-methyl-2-oxobutanoate dehydrogenase (acetyl-transferring)] phosphate.;function:Catalyzes the phosphorylation and inactivation of the branched-chain alpha-ketoacid dehydrogenase complex, the key regulatory enzyme of the valine, leucine and isoleucine catabolic pathways. Key enzyme that regulate the activity state of the BCKD complex.;PTM:Autophosphorylated.;similarity:Belongs to the PDK/BCKDK protein kinase family.;similarity:Contains 1 histidine kinase domain.;subunit:Monomer.;tissue specificity:Ubiquitous.,
<b>Background</b>	The branched-chain alpha-ketoacid dehydrogenase complex (BCKD) is an important regulator of the valine, leucine, and isoleucine catabolic pathways. The protein encoded by this gene is found in the mitochondrion, where it



phosphorylates and inactivates BCKD. Several transcript variants encoding different isoforms have been found for this gene. [provided by RefSeq, Dec 2012],

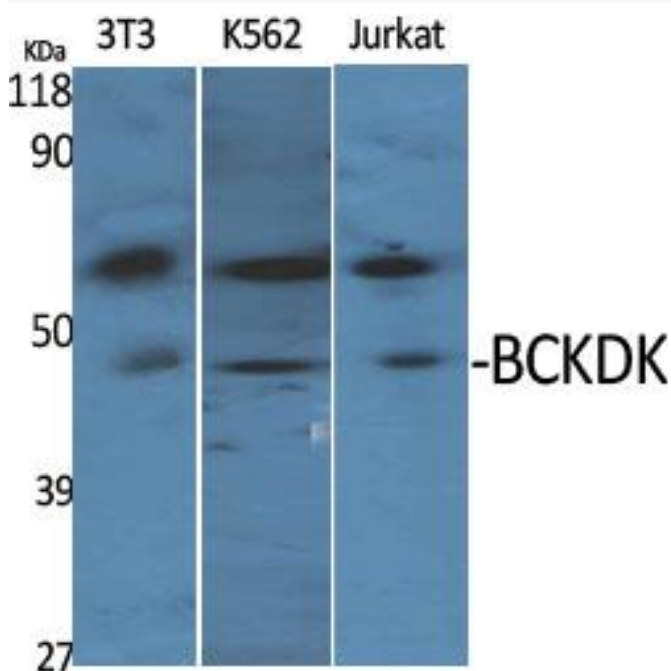
**matters needing attention**

Avoid repeated freezing and thawing!

**Usage suggestions**

This product can be used in immunological reaction related experiments. For more information, please consult technical personnel.

**Products Images**



Western Blot analysis of various cells using BCKDK Monoclonal Antibody