



AMPD2 Monoclonal Antibody

| | |
|---------------------------|--|
| Catalog No | YP-mAb-02496 |
| Isotype | IgG |
| Reactivity | Human;Mouse;Rat |
| Applications | WB |
| Gene Name | AMPD2 |
| Protein Name | AMP deaminase 2 |
| Immunogen | The antiserum was produced against synthesized peptide derived from human AMPD2. AA range:131-180 |
| Specificity | AMPD2 Monoclonal Antibody detects endogenous levels of AMPD2 protein. |
| Formulation | Liquid in PBS containing 50% glycerol, 0.5% BSA and 0.02% sodium azide. |
| Source | Monoclonal, Mouse,IgG |
| Purification | The antibody was affinity-purified from mouse antiserum by affinity-chromatography using epitope-specific immunogen. |
| Dilution | WB 1:500-1:2000 |
| Concentration | 1 mg/ml |
| Purity | ≥90% |
| Storage Stability | -20°C/1 year |
| Synonyms | AMPD2; AMP deaminase 2; AMP deaminase isoform L |
| Observed Band | 100kD |
| Cell Pathway | cytosol, |
| Tissue Specificity | Highly expressed in cerebellum. |
| Function | catalytic activity:AMP + H ₂ O = IMP + NH ₃ .,function:AMP deaminase plays a critical role in energy metabolism.,pathway:Purine metabolism; IMP biosynthesis via salvage pathway; IMP from AMP: step 1/1.,similarity:Belongs to the adenosine and AMP deaminases family.,subunit:Homotetramer.,tissue specificity:Three isoforms are present in mammals: AMP deaminase 1 is the predominant form in skeletal muscle; AMP deaminase 2 predominates in smooth muscle, non-muscle tissue, embryonic muscle and undifferentiated myoblasts; AMP deaminase 3 is found in erythrocytes., |
| Background | The protein encoded by this gene is important in purine metabolism by converting AMP to IMP. The encoded protein, which acts as a homotetramer, is one of three AMP deaminases found in mammals. Several transcript variants encoding different isoforms have been found for this gene. [provided by RefSeq, Apr 2012], |



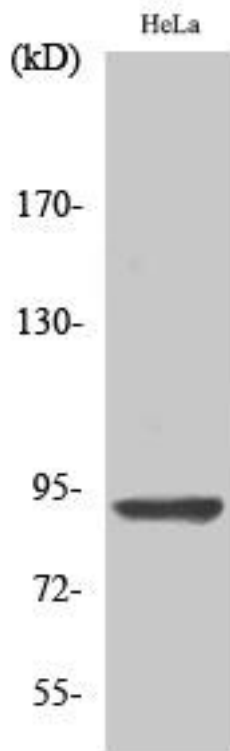
matters needing attention

Avoid repeated freezing and thawing!

Usage suggestions

This product can be used in immunological reaction related experiments. For more information, please consult technical personnel.

Products Images



Western Blot analysis of various cells using AMPD2 Monoclonal Antibody