

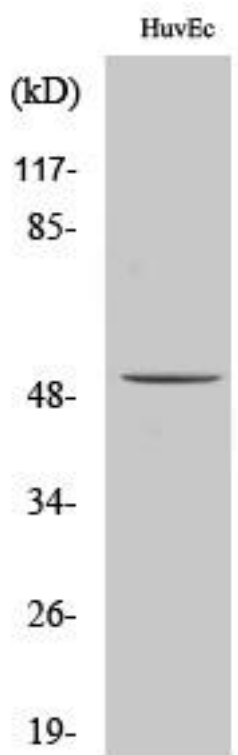


# ALDH3B1 Monoclonal Antibody

<b>Catalog No</b>	YP-mAb-02491
<b>Isotype</b>	IgG
<b>Reactivity</b>	Human;Rat;Mouse;
<b>Applications</b>	WB
<b>Gene Name</b>	ALDH3B1
<b>Protein Name</b>	Aldehyde dehydrogenase family 3 member B1
<b>Immunogen</b>	The antiserum was produced against synthesized peptide derived from human ALDH3B1. AA range:51-100
<b>Specificity</b>	ALDH3B1 Monoclonal Antibody detects endogenous levels of ALDH3B1 protein.
<b>Formulation</b>	Liquid in PBS containing 50% glycerol, 0.5% BSA and 0.02% sodium azide.
<b>Source</b>	Monoclonal, Mouse,IgG
<b>Purification</b>	The antibody was affinity-purified from mouse antiserum by affinity-chromatography using epitope-specific immunogen.
<b>Dilution</b>	WB 1:500-1:2000
<b>Concentration</b>	1 mg/ml
<b>Purity</b>	≥90%
<b>Storage Stability</b>	-20°C/1 year
<b>Synonyms</b>	ALDH3B1; ALDH7; Aldehyde dehydrogenase family 3 member B1; Aldehyde dehydrogenase 7
<b>Observed Band</b>	52kD
<b>Cell Pathway</b>	Cell membrane ; Lipid-anchor . Primarily in the plasma membrane as well as in some punctate structures in the cytoplasm.
<b>Tissue Specificity</b>	Highest expression in kidney and lung.
<b>Function</b>	catalytic activity:An aldehyde + NAD(P)(+) + H(2)O = an acid + NAD(P)H.,pathway:Alcohol metabolism; ethanol degradation; acetate from ethanol: step 2/2.,similarity:Belongs to the aldehyde dehydrogenase family.,tissue specificity:Highest expression in kidney and lung.,
<b>Background</b>	This gene encodes a member of the aldehyde dehydrogenase protein family. Aldehyde dehydrogenases are a family of isozymes that may play a major role in the detoxification of aldehydes generated by alcohol metabolism and lipid peroxidation. The encoded protein is able to oxidize long-chain fatty aldehydes in vitro, and may play a role in protection from oxidative stress. Alternative splicing results in multiple transcript variants. [provided by RefSeq, Feb 2014],
<b>matters needing attention</b>	Avoid repeated freezing and thawing!

**Usage suggestions**

This product can be used in immunological reaction related experiments. For more information, please consult technical personnel.

**Products Images**

Western Blot analysis of various cells using ALDH3B1 Monoclonal Antibody