



# ABHD6 Monoclonal Antibody

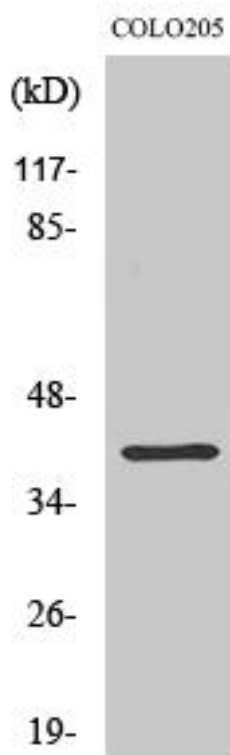
<b>Catalog No</b>	YP-mAb-02457
<b>Isotype</b>	IgG
<b>Reactivity</b>	Human;Mouse;Rat
<b>Applications</b>	WB
<b>Gene Name</b>	ABHD6
<b>Protein Name</b>	Monoacylglycerol lipase ABHD6
<b>Immunogen</b>	The antiserum was produced against synthesized peptide derived from human ABHD6. AA range:231-280
<b>Specificity</b>	ABHD6 Monoclonal Antibody detects endogenous levels of ABHD6 protein.
<b>Formulation</b>	Liquid in PBS containing 50% glycerol, 0.5% BSA and 0.02% sodium azide.
<b>Source</b>	Monoclonal, Mouse,IgG
<b>Purification</b>	The antibody was affinity-purified from mouse antiserum by affinity-chromatography using epitope-specific immunogen.
<b>Dilution</b>	WB 1:500-1:2000
<b>Concentration</b>	1 mg/ml
<b>Purity</b>	≥90%
<b>Storage Stability</b>	-20°C/1 year
<b>Synonyms</b>	ABHD6; Monoacylglycerol lipase ABHD6; 2-arachidonoylglycerol hydrolase; Abhydrolase domain-containing protein 6
<b>Observed Band</b>	38kD
<b>Cell Pathway</b>	Late endosome membrane ; Single-pass type II membrane protein . Lysosome membrane ; Single-pass type II membrane protein . Mitochondrion membrane ; Single-pass type II membrane protein .
<b>Tissue Specificity</b>	Cerebellum,Hepatoma,Lung,Pituitary,Skin,
<b>Function</b>	catalytic activity:Hydrolyzes glycerol monoesters of long-chain fatty acids.,function:Has 2-arachidonoylglycerol hydrolase activity (By similarity). May be a regulator of endocannabinoid signaling pathways.,similarity:Belongs to the AB hydrolase superfamily.,
<b>Background</b>	catalytic activity:Hydrolyzes glycerol monoesters of long-chain fatty acids.,function:Has 2-arachidonoylglycerol hydrolase activity (By similarity). May be a regulator of endocannabinoid signaling pathways.,similarity:Belongs to the AB hydrolase superfamily.,
<b>matters needing attention</b>	Avoid repeated freezing and thawing!



### Usage suggestions

This product can be used in immunological reaction related experiments. For more information, please consult technical personnel.

### Products Images



Western Blot analysis of various cells using ABHD6 Monoclonal Antibody