



# Cleaved-KLK11 (I54) Monoclonal Antibody

<b>Catalog No</b>	YP-mAb-02288
<b>Isotype</b>	IgG
<b>Reactivity</b>	Human;Rat;Mouse;
<b>Applications</b>	WB
<b>Gene Name</b>	KLK11
<b>Protein Name</b>	Kallikrein-11
<b>Immunogen</b>	The antiserum was produced against synthesized peptide derived from human Kallikrein-11. AA range:35-84
<b>Specificity</b>	Cleaved-KLK11 (I54) Monoclonal Antibody detects endogenous levels of fragment of activated KLK11 protein resulting from cleavage adjacent to I54.
<b>Formulation</b>	Liquid in PBS containing 50% glycerol, 0.5% BSA and 0.02% sodium azide.
<b>Source</b>	Monoclonal, Mouse,IgG
<b>Purification</b>	The antibody was affinity-purified from mouse antiserum by affinity-chromatography using epitope-specific immunogen.
<b>Dilution</b>	WB 1:500-1:2000
<b>Concentration</b>	1 mg/ml
<b>Purity</b>	≥90%
<b>Storage Stability</b>	-20°C/1 year
<b>Synonyms</b>	KLK11; PRSS20; TLSP; Kallikrein-11; hK11; Hippostasin; Serine protease 20; Trypsin-like protease
<b>Observed Band</b>	25kD
<b>Cell Pathway</b>	[Isoform 1]: Secreted.; [Isoform 2]: Golgi apparatus.
<b>Tissue Specificity</b>	Expressed in brain, skin and prostate. Isoform 1 is expressed preferentially in brain. Isoform 2 is expressed in prostate. Present in seminal plasma at concentrations ranging from 2 to 37 microg/mL (at protein level).
<b>Function</b>	function:Possible multifunctional protease. Efficiently cleaves 'bz-Phe-Arg-4-methylcoumaryl-7-amide', a kallikrein substrate, and weakly cleaves other substrates for kallikrein and trypsin. Cleaves synthetic peptides after arginine but not lysine residues.,PTM:About 40% of KLK11 is inactivated by internal cleavage after Arg-188. This proteolytic inactivation may be effected by plasminogen.,similarity:Belongs to the peptidase S1 family.,similarity:Belongs to the peptidase S1 family. Kallikrein subfamily.,similarity:Contains 1 peptidase S1 domain.,tissue specificity:Expressed in brain, skin and prostate. Isoform 1 is expressed preferentially in brain; isoform 2 in prostate. Present in seminal plasma at concentrations ranging from 2 to 37 microg/mL (at protein level).,
<b>Background</b>	Kallikreins are a subgroup of serine proteases having diverse physiological functions. Growing evidence suggests that many kallikreins are implicated in



carcinogenesis and some have potential as novel cancer and other disease biomarkers. This gene is one of the fifteen kallikrein subfamily members located in a cluster on chromosome 19. Alternate splicing of this gene results in multiple transcript variants encoding distinct isoforms which are differentially expressed.[provided by RefSeq, Nov 2009],

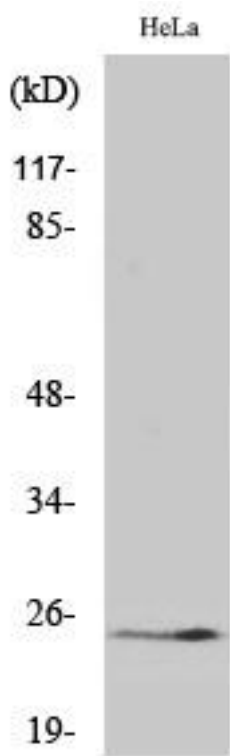
**matters needing attention**

Avoid repeated freezing and thawing!

**Usage suggestions**

This product can be used in immunological reaction related experiments. For more information, please consult technical personnel.

## Products Images



Western Blot analysis of various cells using Cleaved-KLK11 (I54) Monoclonal Antibody