



Cleaved-Cathepsin Z (L62) Monoclonal Antibody

| | |
|---------------------------|---|
| Catalog No | YP-mAb-02287 |
| Isotype | IgG |
| Reactivity | Human;Monkey |
| Applications | WB |
| Gene Name | CTSZ |
| Protein Name | Cathepsin Z |
| Immunogen | The antiserum was produced against synthesized peptide derived from human CATZ. AA range:43-92 |
| Specificity | Cleaved-Cathepsin Z (L62) Monoclonal Antibody detects endogenous levels of fragment of activated Cathepsin Z protein resulting from cleavage adjacent to L62. |
| Formulation | Liquid in PBS containing 50% glycerol, 0.5% BSA and 0.02% sodium azide. |
| Source | Monoclonal, Mouse,IgG |
| Purification | The antibody was affinity-purified from mouse antiserum by affinity-chromatography using epitope-specific immunogen. |
| Dilution | WB 1:500-1:2000 |
| Concentration | 1 mg/ml |
| Purity | ≥90% |
| Storage Stability | -20°C/1 year |
| Synonyms | CTSZ; Cathepsin Z; Cathepsin P; Cathepsin X |
| Observed Band | 27kD |
| Cell Pathway | Lysosome. |
| Tissue Specificity | Widely expressed. |
| Function | catalytic activity:Release of C-terminal amino acid residues with broad specificity, but lacks action on C-terminal proline. Shows weak endopeptidase activity.,function:Exhibits carboxy-monopeptidase as well as carboxy-dipeptidase activity.,similarity:Belongs to the peptidase C1 family.,tissue specificity:Widely expressed., |
| Background | The protein encoded by this gene is a lysosomal cysteine proteinase and member of the peptidase C1 family. It exhibits both carboxy-monopeptidase and carboxy-dipeptidase activities. The encoded protein has also been known as cathepsin X and cathepsin P. This gene is expressed ubiquitously in cancer cell lines and primary tumors and, like other members of this family, may be involved in tumorigenesis. [provided by RefSeq, Oct 2008], |



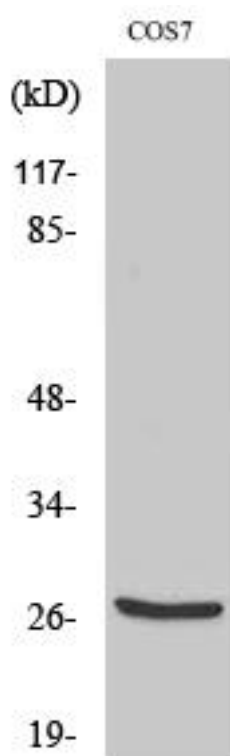
matters needing attention

Avoid repeated freezing and thawing!

Usage suggestions

This product can be used in immunological reaction related experiments. For more information, please consult technical personnel.

Products Images



Western Blot analysis of various cells using
Cleaved-Cathepsin Z (L62) Monoclonal Antibody