



# eIF5A/eIF5A2 Monoclonal Antibody

<b>Catalog No</b>	YP-mAb-02266
<b>Isotype</b>	IgG
<b>Reactivity</b>	Human; Mouse; Rat
<b>Applications</b>	WB
<b>Gene Name</b>	EIF5A
<b>Protein Name</b>	eIF5A/eIF5A2
<b>Immunogen</b>	Synthesized peptide derived from human eIF5A/eIF5A2
<b>Specificity</b>	This antibody detects endogenous levels of human eIF5A/eIF5A2
<b>Formulation</b>	Liquid in PBS containing 50% glycerol, 0.5% BSA and 0.02% sodium azide.
<b>Source</b>	Monoclonal, Mouse,IgG
<b>Purification</b>	The antibody was affinity-purified from mouse antiserum by affinity-chromatography using epitope-specific immunogen.
<b>Dilution</b>	WB 1:500-1:2000
<b>Concentration</b>	1 mg/ml
<b>Purity</b>	≥90%
<b>Storage Stability</b>	-20°C/1 year
<b>Synonyms</b>	Eukaryotic translation initiation factor 5A-1 (eIF-5A-1;eIF-5A1;Eukaryotic initiation factor 5A isoform 1;eIF-5A;Rev-binding factor;eIF-4D)
<b>Observed Band</b>	17kD
<b>Cell Pathway</b>	Cytoplasm . Nucleus . Endoplasmic reticulum membrane ; Peripheral membrane protein ; Cytoplasmic side . Hypusine modification promotes the nuclear export and cytoplasmic localization and there was a dynamic shift in the localization from predominantly cytoplasmic to primarily nuclear under apoptotic inducing conditions (PubMed:19379712, PubMed:27306458). Nuclear export of hypusinated protein is mediated by XPO4 (PubMed:10944119, PubMed:27306458). .
<b>Tissue Specificity</b>	Expressed in umbilical vein endothelial cells and several cancer cell lines (at protein level).
<b>Function</b>	function:The precise role of eIF-5A in protein biosynthesis is not known but it functions by promoting the formation of the first peptide bond.,PTM:eIF-5A seems to be the only eukaryotic protein to have an hypusine residue which is a post-translational modification of a lysine by the addition of a butylamino group (from spermidine).,similarity:Belongs to the eIF-5A family.,subunit:Found in a complex with Ran and XPO4. The hypusine modification increases the interaction with XPO4.,tissue specificity:Expressed in umbilical vein endothelial cells and several cancer cell lines (at protein level).,



## Background

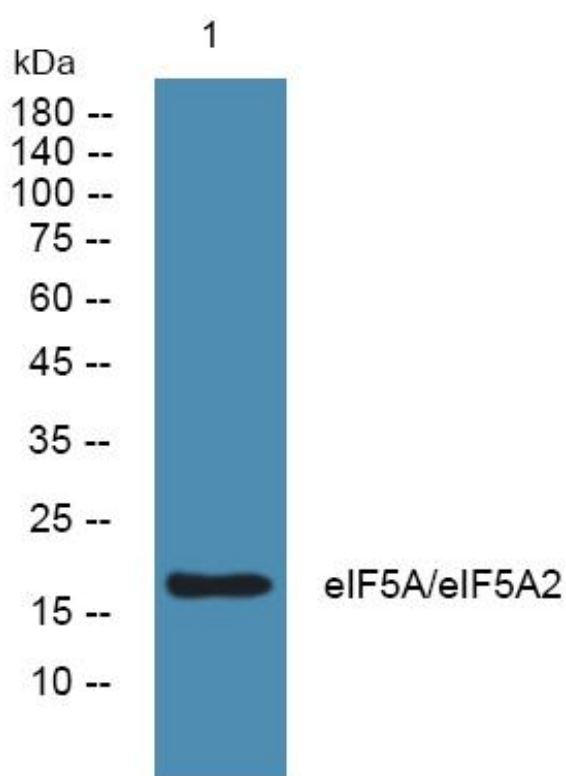
### matters needing attention

Avoid repeated freezing and thawing!

### Usage suggestions

This product can be used in immunological reaction related experiments. For more information, please consult technical personnel.

## Products Images



Western Blot analysis of various cells using eIF5A/eIF5A2 Monoclonal Antibody