

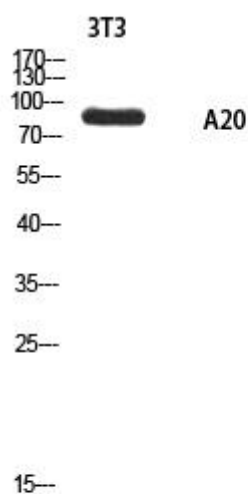


A20 Monoclonal Antibody

Catalog No	YP-mAb-02257
Isotype	IgG
Reactivity	Human;Rat;Mouse;
Applications	WB
Gene Name	ANKRD20A1
Protein Name	Ankyrin repeat domain-containing protein 20A1
Immunogen	Synthesized peptide derived from the Internal region of human A20.
Specificity	A20 Monoclonal Antibody detects endogenous levels of A20 protein.
Formulation	Liquid in PBS containing 50% glycerol, 0.5% BSA and 0.02% sodium azide.
Source	Monoclonal, Mouse,IgG
Purification	The antibody was affinity-purified from mouse antiserum by affinity-chromatography using epitope-specific immunogen.
Dilution	WB 1:500-1:2000
Concentration	1 mg/ml
Purity	≥90%
Storage Stability	-20°C/1 year
Synonyms	ANKRD20A1; ANKRD20A; Ankyrin repeat domain-containing protein 20A1
Observed Band	95kD
Cell Pathway	plasma membrane,
Tissue Specificity	Testis,
Function	similarity:Contains 5 ANK repeats.,tissue specificity:Widely expressed; not found in kidney, nor in liver.,
Background	similarity:Contains 5 ANK repeats.,tissue specificity:Widely expressed; not found in kidney, nor in liver.,
matters needing attention	Avoid repeated freezing and thawing!
Usage suggestions	This product can be used in immunological reaction related experiments. For more information, please consult technical personnel.



Products Images



Western Blot analysis of various cells using A20
Monoclonal Antibody