



# ZKSCAN4 Monoclonal Antibody

<b>Catalog No</b>	YP-mAb-02234
<b>Isotype</b>	IgG
<b>Reactivity</b>	Human;Rat;Mouse;
<b>Applications</b>	WB
<b>Gene Name</b>	ZKSCAN4
<b>Protein Name</b>	Zinc finger protein with KRAB and SCAN domains 4
<b>Immunogen</b>	Synthesized peptide derived from the Internal region of human ZKSCAN4.
<b>Specificity</b>	ZKSCAN4 Monoclonal Antibody detects endogenous levels of ZKSCAN4 protein.
<b>Formulation</b>	Liquid in PBS containing 50% glycerol, 0.5% BSA and 0.02% sodium azide.
<b>Source</b>	Monoclonal, Mouse,IgG
<b>Purification</b>	The antibody was affinity-purified from mouse antiserum by affinity-chromatography using epitope-specific immunogen.
<b>Dilution</b>	WB 1:500-1:2000
<b>Concentration</b>	1 mg/ml
<b>Purity</b>	≥90%
<b>Storage Stability</b>	-20°C/1 year
<b>Synonyms</b>	ZKSCAN4; ZNF307; ZNF427; Zinc finger protein with KRAB and SCAN domains 4; P373c6.1; Zinc finger protein 307; Zinc finger protein 427
<b>Observed Band</b>	61kD
<b>Cell Pathway</b>	Nucleus .
<b>Tissue Specificity</b>	Expressed in adult heart, brain, placenta, lung and kidney, but not in adult liver and skeletal muscle. In 17-day old embryo, detected in liver, skeletal muscle, brain, heart and small intestine.
<b>Function</b>	function:May be involved in the transcriptional activation of MDM2 and EP300 genes.,PTM:Phosphorylated upon DNA damage, probably by ATM or ATR.,similarity:Belongs to the krueppel C2H2-type zinc-finger protein family.,similarity:Contains 1 KRAB domain.,similarity:Contains 1 SCAN box domain.,similarity:Contains 7 C2H2-type zinc fingers.,tissue specificity:Expressed in adult heart, brain, placenta, lung and kidney, but not in adult liver and skeletal muscle. In 17-day old embryo, detected in liver, skeletal muscle, brain, heart and small intestine.,
<b>Background</b>	function:May be involved in the transcriptional activation of MDM2 and EP300 genes.,PTM:Phosphorylated upon DNA damage, probably by ATM or ATR.,similarity:Belongs to the krueppel C2H2-type zinc-finger protein family.,similarity:Contains 1 KRAB domain.,similarity:Contains 1 SCAN box domain.,similarity:Contains 7 C2H2-type zinc fingers.,tissue specificity:Expressed



in adult heart, brain, placenta, lung and kidney, but not in adult liver and skeletal muscle. In 17-day old embryo, detected in liver, skeletal muscle, brain, heart and small intestine.,

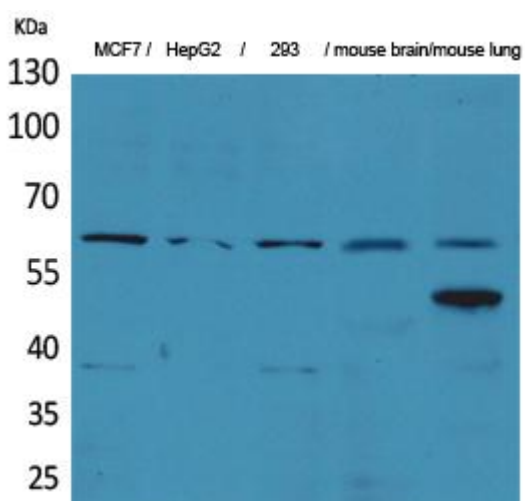
**matters needing attention**

Avoid repeated freezing and thawing!

**Usage suggestions**

This product can be used in immunological reaction related experiments. For more information, please consult technical personnel.

**Products Images**



Western Blot analysis of various cells using ZKSCAN4 Monoclonal Antibody