



MACC1 Monoclonal Antibody

Catalog No	YP-mAb-02232
Isotype	IgG
Reactivity	Human;Mouse
Applications	WB
Gene Name	MACC1
Protein Name	Metastasis-associated in colon cancer protein 1
Immunogen	The antiserum was produced against synthesized peptide derived from the Internal region of human MACC1. AA range:411-460
Specificity	MACC1 Monoclonal Antibody detects endogenous levels of MACC1 protein.
Formulation	Liquid in PBS containing 50% glycerol, 0.5% BSA and 0.02% sodium azide.
Source	Monoclonal, Mouse,IgG
Purification	The antibody was affinity-purified from mouse antiserum by affinity-chromatography using epitope-specific immunogen.
Dilution	WB 1:500-1:2000
Concentration	1 mg/ml
Purity	≥90%
Storage Stability	-20°C/1 year
Synonyms	MACC1; Metastasis-associated in colon cancer protein 1; SH3 domain-containing protein 7a5
Observed Band	97kD
Cell Pathway	Cytoplasm . Nucleus . Mainly found in the cytoplasm in non-metastasizing tumors.
Tissue Specificity	Preferentially expressed in metastasizing tumors.
Function	function:Acts as a transcription activator for MET and as a key regulator of HGF-MET signaling. Promotes cell motility, proliferation and hepatocyte growth factor (HGF)-dependent scattering in vitro and tumor growth and metastasis in vivo.,similarity:Contains 1 SH3 domain.,subcellular location:Mainly found in the cytoplasm in non-metastasizing tumors.,tissue specificity:Preferentially expressed in metastasizing tumors.,
Background	MACC1 is a key regulator of the hepatocyte growth factor (HGF; MIM 142409)-HGF receptor (HGFR, or MET; MIM 164860) pathway, which is involved in cellular growth, epithelial-mesenchymal transition, angiogenesis, cell motility, invasiveness, and metastasis. Expression of MACC1 in colon cancer (MIM 114500) specimens is an independent prognostic indicator for metastasis formation and metastasis-free survival (Stein et al., 2009 [PubMed 19098908]).[supplied by OMIM, Mar 2009],



matters needing attention

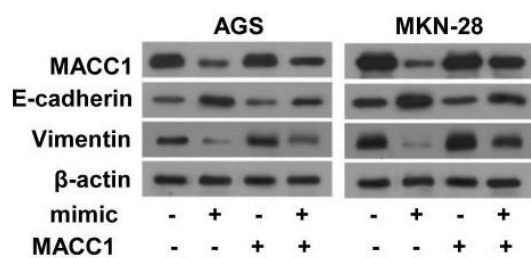
Avoid repeated freezing and thawing!

Usage suggestions

This product can be used in immunological reaction related experiments. For more information, please consult technical personnel.

Products Images

E



Western Blot analysis of various cells using MACC1 Monoclonal Antibody