



# SCML2 Monoclonal Antibody

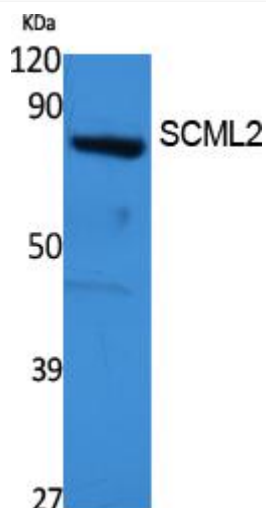
<b>Catalog No</b>	YP-mAb-02226
<b>Isotype</b>	IgG
<b>Reactivity</b>	Human;Rat;Mouse;
<b>Applications</b>	WB
<b>Gene Name</b>	SCML2
<b>Protein Name</b>	Sex comb on midleg-like protein 2
<b>Immunogen</b>	Synthesized peptide derived from the Internal region of human SCML2.
<b>Specificity</b>	SCML2 Monoclonal Antibody detects endogenous levels of SCML2 protein.
<b>Formulation</b>	Liquid in PBS containing 50% glycerol, 0.5% BSA and 0.02% sodium azide.
<b>Source</b>	Monoclonal, Mouse,IgG
<b>Purification</b>	The antibody was affinity-purified from mouse antiserum by affinity-chromatography using epitope-specific immunogen.
<b>Dilution</b>	WB 1:500-1:2000
<b>Concentration</b>	1 mg/ml
<b>Purity</b>	≥90%
<b>Storage Stability</b>	-20°C/1 year
<b>Synonyms</b>	SCML2; Sex comb on midleg-like protein 2
<b>Observed Band</b>	77kD
<b>Cell Pathway</b>	Nucleus .
<b>Tissue Specificity</b>	Highly expressed in placenta, thymus and testis. Detected at lower levels in brain, liver, skeletal muscle, pancreas and ovary.
<b>Function</b>	function:Putative Polycomb group (PcG) protein. PcG proteins act by forming multiprotein complexes, which are required to maintain the transcriptionally repressive state of homeotic genes throughout development.,PTM:Phosphorylated upon DNA damage, probably by ATM or ATR.,similarity:Belongs to the SCM family.,similarity:Contains 1 SAM (sterile alpha motif) domain.,similarity:Contains 2 MBT repeats.,tissue specificity:Highly expressed in placenta, thymus and testis. Detected at lower levels in brain, liver, skeletal muscle, pancreas and ovary.,
<b>Background</b>	This gene encodes a member of the Polycomb group proteins. These proteins form the Polycomb repressive complexes which are involved in transcriptional repression. The encoded protein binds histone peptides that are monomethylated at lysine residues and may be involved in regulating homeotic gene expression during development. [provided by RefSeq, Jun 2010],

**matters needing attention**

Avoid repeated freezing and thawing!

**Usage suggestions**

This product can be used in immunological reaction related experiments. For more information, please consult technical personnel.

**Products Images**

Western Blot analysis of various cells using SCML2 Monoclonal Antibody