



# DNA pol $\epsilon$ B Monoclonal Antibody

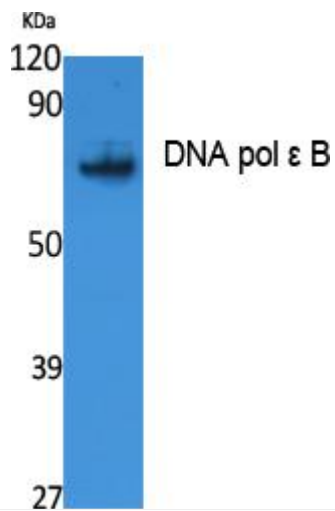
<b>Catalog No</b>	YP-mAb-02220
<b>Isotype</b>	IgG
<b>Reactivity</b>	Human;Rat;Mouse;
<b>Applications</b>	WB
<b>Gene Name</b>	POLE2
<b>Protein Name</b>	DNA polymerase epsilon subunit 2
<b>Immunogen</b>	Synthesized peptide derived from the Internal region of human DNA pol $\epsilon$ B.
<b>Specificity</b>	DNA pol $\epsilon$ B Monoclonal Antibody detects endogenous levels of DNA pol $\epsilon$ B protein.
<b>Formulation</b>	Liquid in PBS containing 50% glycerol, 0.5% BSA and 0.02% sodium azide.
<b>Source</b>	Monoclonal, Mouse,IgG
<b>Purification</b>	The antibody was affinity-purified from mouse antiserum by affinity-chromatography using epitope-specific immunogen.
<b>Dilution</b>	WB 1:500-1:2000
<b>Concentration</b>	1 mg/ml
<b>Purity</b>	$\geq 90\%$
<b>Storage Stability</b>	-20°C/1 year
<b>Synonyms</b>	POLE2; DPE2; DNA polymerase epsilon subunit 2; DNA polymerase II subunit 2; DNA polymerase epsilon subunit B
<b>Observed Band</b>	59kD
<b>Cell Pathway</b>	Nucleus.
<b>Tissue Specificity</b>	T cells,
<b>Function</b>	catalytic activity:Deoxynucleoside triphosphate + DNA(n) = diphosphate + DNA(n+1).,function:Participates in DNA repair and in chromosomal DNA replication.,miscellaneous:In eukaryotes there are five DNA polymerases: alpha, beta, gamma, delta, and epsilon which are responsible for different reactions of DNA synthesis.,similarity:Belongs to the DNA polymerase epsilon subunit B family.,subunit:Consists of four subunits: POLE, POLE2, POLE3 and POLE4.,
<b>Background</b>	catalytic activity:Deoxynucleoside triphosphate + DNA(n) = diphosphate + DNA(n+1).,function:Participates in DNA repair and in chromosomal DNA replication.,miscellaneous:In eukaryotes there are five DNA polymerases: alpha, beta, gamma, delta, and epsilon which are responsible for different reactions of DNA synthesis.,similarity:Belongs to the DNA polymerase epsilon subunit B family.,subunit:Consists of four subunits: POLE, POLE2, POLE3 and POLE4.,

**matters needing attention**

Avoid repeated freezing and thawing!

**Usage suggestions**

This product can be used in immunological reaction related experiments. For more information, please consult technical personnel.

**Products Images**

Western Blot analysis of various cells using DNA pol ε B Monoclonal Antibody