

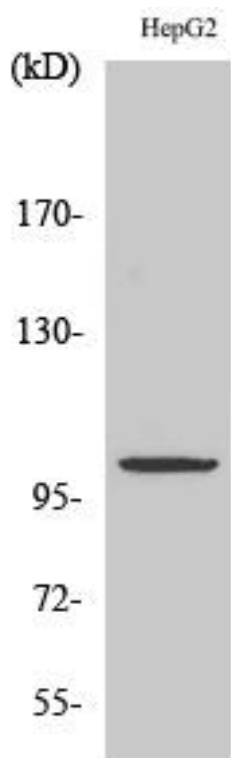


ZZZ3 Monoclonal Antibody

Catalog No	YP-mAb-02209
Isotype	IgG
Reactivity	Human;Mouse;Rat
Applications	WB
Gene Name	ZZZ3
Protein Name	ZZ-type zinc finger-containing protein 3
Immunogen	The antiserum was produced against synthesized peptide derived from human ZZZ3. AA range:341-390
Specificity	ZZZ3 Monoclonal Antibody detects endogenous levels of ZZZ3 protein.
Formulation	Liquid in PBS containing 50% glycerol, 0.5% BSA and 0.02% sodium azide.
Source	Monoclonal, Mouse,IgG
Purification	The antibody was affinity-purified from mouse antiserum by affinity-chromatography using epitope-specific immunogen.
Dilution	WB 1:500-1:2000
Concentration	1 mg/ml
Purity	≥90%
Storage Stability	-20°C/1 year
Synonyms	ZZZ3; ZZ-type zinc finger-containing protein 3
Observed Band	102kD
Cell Pathway	Nucleus .
Tissue Specificity	Adipose tissue,Brain,Colon endothelium,Lymph,Placenta,Rectum tumor,Spleen,
Function	PTM:Phosphorylated upon DNA damage, probably by ATM or ATR.,similarity:Contains 1 HTH myb-type DNA-binding domain.,similarity:Contains 1 ZZ-type zinc finger.,
Background	PTM:Phosphorylated upon DNA damage, probably by ATM or ATR.,similarity:Contains 1 HTH myb-type DNA-binding domain.,similarity:Contains 1 ZZ-type zinc finger.,
matters needing attention	Avoid repeated freezing and thawing!
Usage suggestions	This product can be used in immunological reaction related experiments. For more information, please consult technical personnel.



Products Images



Western Blot analysis of various cells using ZZZ3 Monoclonal Antibody