

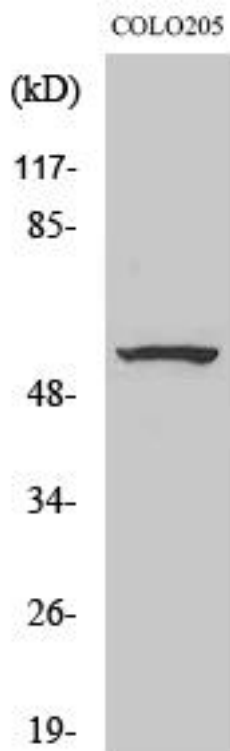


ZNF682 Monoclonal Antibody

| | |
|----------------------------------|---|
| Catalog No | YP-mAb-02199 |
| Isotype | IgG |
| Reactivity | Human;Rat;Mouse; |
| Applications | WB |
| Gene Name | ZNF682 |
| Protein Name | Zinc finger protein 682 |
| Immunogen | The antiserum was produced against synthesized peptide derived from human ZNF682. AA range:21-70 |
| Specificity | ZNF682 Monoclonal Antibody detects endogenous levels of ZNF682 protein. |
| Formulation | Liquid in PBS containing 50% glycerol, 0.5% BSA and 0.02% sodium azide. |
| Source | Monoclonal, Mouse,IgG |
| Purification | The antibody was affinity-purified from mouse antiserum by affinity-chromatography using epitope-specific immunogen. |
| Dilution | WB 1:500-1:2000 |
| Concentration | 1 mg/ml |
| Purity | ≥90% |
| Storage Stability | -20°C/1 year |
| Synonyms | ZNF682; Zinc finger protein 682 |
| Observed Band | 58kD |
| Cell Pathway | Nucleus . |
| Tissue Specificity | Brain,Placenta,Trachea, |
| Function | function:May be involved in transcriptional regulation.,similarity:Belongs to the krueppel C2H2-type zinc-finger protein family.,similarity:Contains 1 KRAB domain.,similarity:Contains 11 C2H2-type zinc fingers., |
| Background | function:May be involved in transcriptional regulation.,similarity:Belongs to the krueppel C2H2-type zinc-finger protein family.,similarity:Contains 1 KRAB domain.,similarity:Contains 11 C2H2-type zinc fingers., |
| matters needing attention | Avoid repeated freezing and thawing! |
| Usage suggestions | This product can be used in immunological reaction related experiments. For more information, please consult technical personnel. |



Products Images



Western Blot analysis of various cells using ZNF682 Monoclonal Antibody