



# ZNF498 Monoclonal Antibody

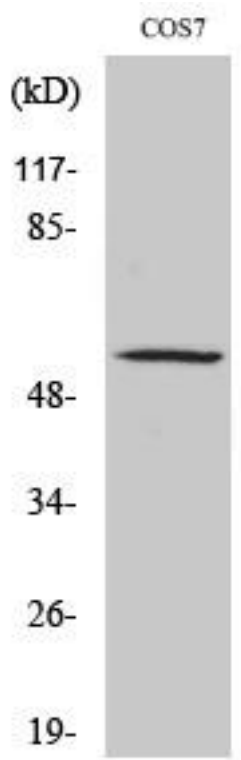
<b>Catalog No</b>	YP-mAb-02191
<b>Isotype</b>	IgG
<b>Reactivity</b>	Human;Monkey
<b>Applications</b>	WB
<b>Gene Name</b>	ZNF498
<b>Protein Name</b>	Zinc finger protein 498
<b>Immunogen</b>	The antiserum was produced against synthesized peptide derived from human ZNF498. AA range:331-380
<b>Specificity</b>	ZNF498 Monoclonal Antibody detects endogenous levels of ZNF498 protein.
<b>Formulation</b>	Liquid in PBS containing 50% glycerol, 0.5% BSA and 0.02% sodium azide.
<b>Source</b>	Monoclonal, Mouse,IgG
<b>Purification</b>	The antibody was affinity-purified from mouse antiserum by affinity-chromatography using epitope-specific immunogen.
<b>Dilution</b>	WB 1:500-1:2000
<b>Concentration</b>	1 mg/ml
<b>Purity</b>	≥90%
<b>Storage Stability</b>	-20°C/1 year
<b>Synonyms</b>	ZNF498; ZSCAN25; Zinc finger protein 498; Zinc finger and SCAN domain-containing protein 25
<b>Observed Band</b>	30kD
<b>Cell Pathway</b>	Nucleus .
<b>Tissue Specificity</b>	Fetal brain,Lung,Lymph,Spleen,
<b>Function</b>	function:May be involved in transcriptional regulation.,sequence caution:Wrong choice of frame.,similarity:Belongs to the krueppel C2H2-type zinc-finger protein family.,similarity:Contains 1 SCAN box domain.,similarity:Contains 7 C2H2-type zinc fingers.,
<b>Background</b>	This gene encodes a protein that bears some similarity to zinc finger proteins, which are involved in DNA binding and protein-protein interactions. Multiple alternatively spliced transcript variants have been identified, but the full-length nature for most of them has not been determined. [provided by RefSeq, Jul 2008],
<b>matters needing attention</b>	Avoid repeated freezing and thawing!



### Usage suggestions

This product can be used in immunological reaction related experiments. For more information, please consult technical personnel.

### Products Images



Western Blot analysis of various cells using ZNF498 Monoclonal Antibody