

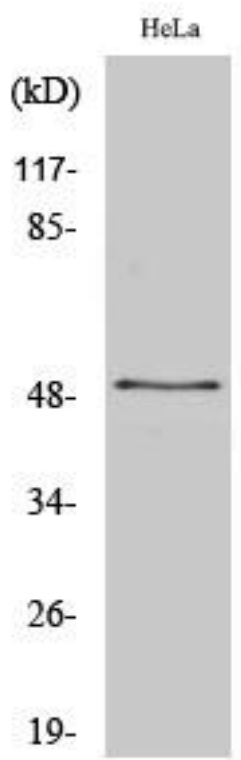


ZNF436 Monoclonal Antibody

Catalog No	YP-mAb-02188
Isotype	IgG
Reactivity	Human;Rat;Mouse;
Applications	WB
Gene Name	ZNF436
Protein Name	Zinc finger protein 436
Immunogen	The antiserum was produced against synthesized peptide derived from human ZNF436. AA range:71-120
Specificity	ZNF436 Monoclonal Antibody detects endogenous levels of ZNF436 protein.
Formulation	Liquid in PBS containing 50% glycerol, 0.5% BSA and 0.02% sodium azide.
Source	Monoclonal, Mouse,IgG
Purification	The antibody was affinity-purified from mouse antiserum by affinity-chromatography using epitope-specific immunogen.
Dilution	WB 1:500-1:2000
Concentration	1 mg/ml
Purity	≥90%
Storage Stability	-20°C/1 year
Synonyms	ZNF436; KIAA1710; Zinc finger protein 436
Observed Band	50kD
Cell Pathway	Nucleus .
Tissue Specificity	Expressed in fetal brain, heart, liver, spleen, bladder, lung, skin, skeletal muscle, stomach and pancreas.
Function	function:May be a transcriptional repressor.,similarity:Belongs to the krueppel C2H2-type zinc-finger protein family.,similarity:Contains 1 KRAB domain.,similarity:Contains 12 C2H2-type zinc fingers.,tissue specificity:Expressed in fetal brain, heart, liver, spleen, bladder, lung, skin, skeletal muscle, stomach and pancreas.,
Background	function:May be a transcriptional repressor.,similarity:Belongs to the krueppel C2H2-type zinc-finger protein family.,similarity:Contains 1 KRAB domain.,similarity:Contains 12 C2H2-type zinc fingers.,tissue specificity:Expressed in fetal brain, heart, liver, spleen, bladder, lung, skin, skeletal muscle, stomach and pancreas.,
matters needing attention	Avoid repeated freezing and thawing!

**Usage suggestions**

This product can be used in immunological reaction related experiments. For more information, please consult technical personnel.

Products Images

Western Blot analysis of various cells using ZNF436 Monoclonal Antibody