

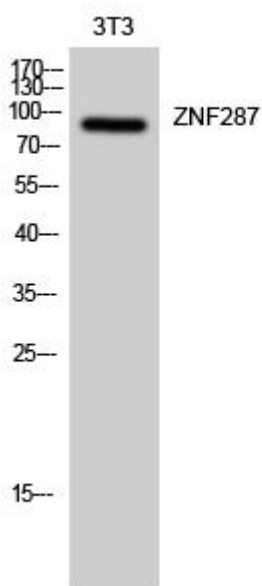


# ZNF287 Monoclonal Antibody

<b>Catalog No</b>	YP-mAb-02182
<b>Isotype</b>	IgG
<b>Reactivity</b>	Human;Rat;Mouse;
<b>Applications</b>	WB
<b>Gene Name</b>	ZNF287
<b>Protein Name</b>	Zinc finger protein 287
<b>Immunogen</b>	The antiserum was produced against synthesized peptide derived from human ZNF287. AA range:241-290
<b>Specificity</b>	ZNF287 Monoclonal Antibody detects endogenous levels of ZNF287 protein.
<b>Formulation</b>	Liquid in PBS containing 50% glycerol, 0.5% BSA and 0.02% sodium azide.
<b>Source</b>	Monoclonal, Mouse,IgG
<b>Purification</b>	The antibody was affinity-purified from mouse antiserum by affinity-chromatography using epitope-specific immunogen.
<b>Dilution</b>	WB 1:500-1:2000
<b>Concentration</b>	1 mg/ml
<b>Purity</b>	≥90%
<b>Storage Stability</b>	-20°C/1 year
<b>Synonyms</b>	ZNF287; ZKSCAN13; Zinc finger protein 287; Zinc finger protein with KRAB and SCAN domains 13
<b>Observed Band</b>	90kD
<b>Cell Pathway</b>	Nucleus .
<b>Tissue Specificity</b>	Brain,
<b>Function</b>	function:May be involved in transcriptional regulation.,similarity:Belongs to the krueppel C2H2-type zinc-finger protein family.,similarity:Contains 1 KRAB domain.,similarity:Contains 1 SCAN box domain.,similarity:Contains 14 C2H2-type zinc fingers.,
<b>Background</b>	zinc finger protein 287(ZNF287) Homo sapiens This gene encodes a member of the krueppel family of zinc finger proteins, suggesting a role as a transcription factor. Its specific function has not been determined. This gene is located near the Smith-Magenis syndrome region on chromosome 17. [provided by RefSeq, Jul 2008],
<b>matters needing attention</b>	Avoid repeated freezing and thawing!

**Usage suggestions**

This product can be used in immunological reaction related experiments. For more information, please consult technical personnel.

**Products Images**

Western Blot analysis of various cells using ZNF287 Monoclonal Antibody