



Zhangfei Monoclonal Antibody

Catalog No	YP-mAb-02171
Isotype	IgG
Reactivity	Human;Mouse
Applications	WB
Gene Name	CREBZF
Protein Name	CREB/ATF bZIP transcription factor
Immunogen	The antiserum was produced against synthesized peptide derived from human CREBZF. AA range:221-270
Specificity	Zhangfei Monoclonal Antibody detects endogenous levels of Zhangfei protein.
Formulation	Liquid in PBS containing 50% glycerol, 0.5% BSA and 0.02% sodium azide.
Source	Monoclonal, Mouse,IgG
Purification	The antibody was affinity-purified from mouse antiserum by affinity-chromatography using epitope-specific immunogen.
Dilution	WB 1:500-1:2000
Concentration	1 mg/ml
Purity	≥90%
Storage Stability	-20°C/1 year
Synonyms	CREBZF; ZF; CREB/ATF bZIP transcription factor; Host cell factor-binding transcription factor Zhangfei; HCF-binding transcription factor Zhangfei
Observed Band	26kD
Cell Pathway	Nucleus . Colocalizes in promyelocytic leukemia protein nuclear bodies (PML-NB) with CREB3 and HCFC1.
Tissue Specificity	In adults, expressed most abundantly in heart, liver and skeletal muscle, moderately abundant in kidney and pancreas, and barely detectable in lung. In fetal tissues, expressed most abundantly in kidney and very low amounts in heart, lung and liver.
Function	function:Strongly activates transcription when bound to HCFC1. Suppresses the expression of HSV proteins in cells infected with the virus in a HCFC1-dependent manner. Also suppresses the HCFC1-dependent transcriptional activation by CREB3 and reduces the amount of CREB3 in the cell. Able to down-regulate expression of some cellular genes in CREBZF-expressing cells.,miscellaneous:Named Zhangfei after a legendary Chinese warrior who was contemporary with Luman in around 220 AD.,similarity:Belongs to the bZIP family. ATF subfamily.,similarity:Contains 1 bZIP domain.,subcellular location:Colocalizes at punctate nuclear structures with CREB3 and HCFC1.,subunit:Interacts with HCFC1, causing suppression of CREB3 transcriptional activity.,tissue specificity:In adults, expressed most abundantly in heart, liver and skeletal muscle, moderately abundant in kidney and pancreas,



and barely detectable

Background

function: Strongly activates transcription when bound to HCFC1. Suppresses the expression of HSV proteins in cells infected with the virus in a HCFC1-dependent manner. Also suppresses the HCFC1-dependent transcriptional activation by CREB3 and reduces the amount of CREB3 in the cell. Able to down-regulate expression of some cellular genes in CREBZF-expressing cells., miscellaneous: Named Zhangfei after a legendary Chinese warrior who was contemporary with Luman in around 220 AD., similarity: Belongs to the bZIP family. ATF subfamily., similarity: Contains 1 bZIP domain., subcellular location: Colocalizes at punctate nuclear structures with CREB3 and HCFC1., subunit: Interacts with HCFC1, causing suppression of CREB3 transcriptional activity., tissue specificity: In adults, expressed most abundantly in heart, liver and skeletal muscle, moderately abundant in kidney and pancreas, and barely detectable in lungs. In fetal tissues, expressed most abundantly in kidney and very low amounts in heart, lung and liver.,

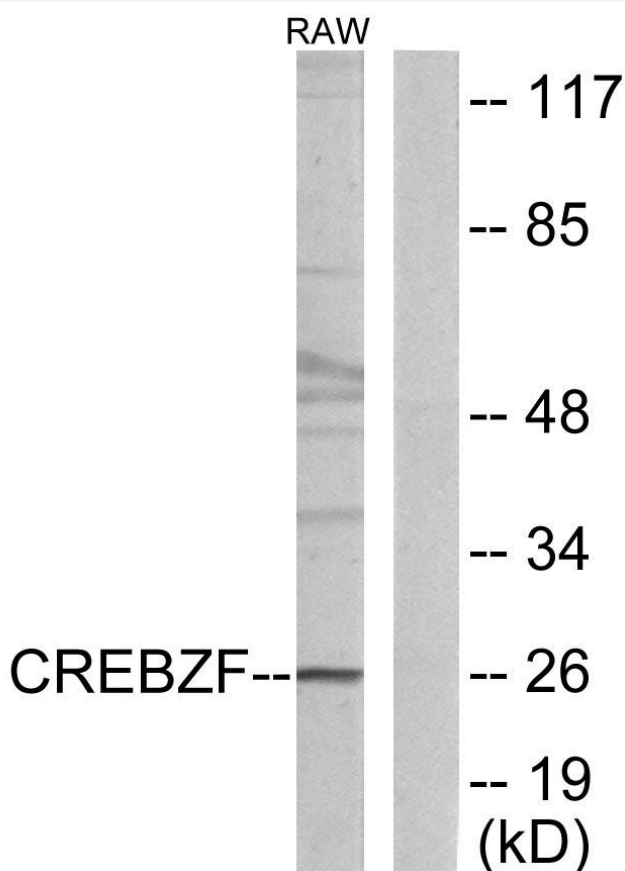
matters needing attention

Avoid repeated freezing and thawing!

Usage suggestions

This product can be used in immunological reaction related experiments. For more information, please consult technical personnel.

Products Images



Western Blot analysis of various cells using Zhangfei Monoclonal Antibody