

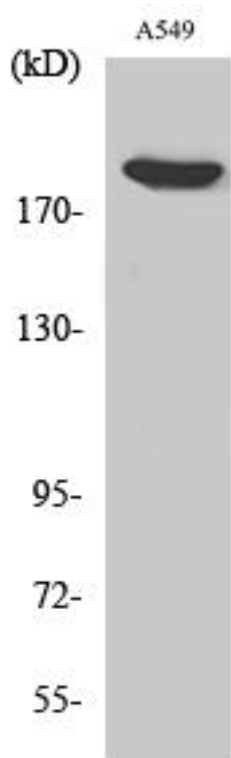


# ZC3H13 Monoclonal Antibody

<b>Catalog No</b>	YP-mAb-02165
<b>Isotype</b>	IgG
<b>Reactivity</b>	Human;Mouse
<b>Applications</b>	WB
<b>Gene Name</b>	ZC3H13
<b>Protein Name</b>	Zinc finger CCCH domain-containing protein 13
<b>Immunogen</b>	The antiserum was produced against synthesized peptide derived from human ZC3H13. AA range:1571-1620
<b>Specificity</b>	ZC3H13 Monoclonal Antibody detects endogenous levels of ZC3H13 protein.
<b>Formulation</b>	Liquid in PBS containing 50% glycerol, 0.5% BSA and 0.02% sodium azide.
<b>Source</b>	Monoclonal, Mouse,IgG
<b>Purification</b>	The antibody was affinity-purified from mouse antiserum by affinity-chromatography using epitope-specific immunogen.
<b>Dilution</b>	WB 1:500-1:2000
<b>Concentration</b>	1 mg/ml
<b>Purity</b>	≥90%
<b>Storage Stability</b>	-20°C/1 year
<b>Synonyms</b>	ZC3H13; KIAA0853; Zinc finger CCCH domain-containing protein 13
<b>Observed Band</b>	200kD
<b>Cell Pathway</b>	Nucleus speckle . Nucleus, nucleoplasm .
<b>Tissue Specificity</b>	Brain,Breast,Epithelium,Fetal brain,T-cell,Testis,Uterus,
<b>Function</b>	PTM:Phosphorylated upon DNA damage, probably by ATM or ATR.,similarity:Contains 1 C3H1-type zinc finger.,
<b>Background</b>	PTM:Phosphorylated upon DNA damage, probably by ATM or ATR.,similarity:Contains 1 C3H1-type zinc finger.,
<b>matters needing attention</b>	Avoid repeated freezing and thawing!
<b>Usage suggestions</b>	This product can be used in immunological reaction related experiments. For more information, please consult technical personnel.



## Products Images



Western Blot analysis of various cells using ZC3H13 Monoclonal Antibody