

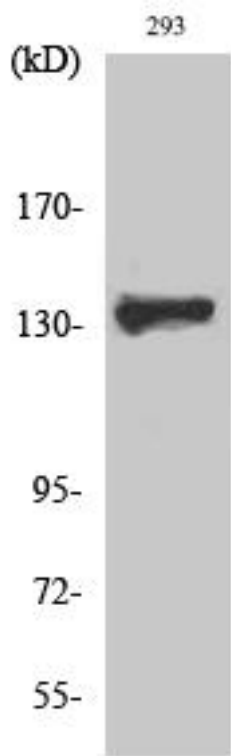


# ZBTB40 Monoclonal Antibody

<b>Catalog No</b>	YP-mAb-02163
<b>Isotype</b>	IgG
<b>Reactivity</b>	Human;Mouse
<b>Applications</b>	WB
<b>Gene Name</b>	ZBTB40
<b>Protein Name</b>	Zinc finger and BTB domain-containing protein 40
<b>Immunogen</b>	The antiserum was produced against synthesized peptide derived from human ZBTB40. AA range:1121-1170
<b>Specificity</b>	ZBTB40 Monoclonal Antibody detects endogenous levels of ZBTB40 protein.
<b>Formulation</b>	Liquid in PBS containing 50% glycerol, 0.5% BSA and 0.02% sodium azide.
<b>Source</b>	Monoclonal, Mouse,IgG
<b>Purification</b>	The antibody was affinity-purified from mouse antiserum by affinity-chromatography using epitope-specific immunogen.
<b>Dilution</b>	WB 1:500-1:2000
<b>Concentration</b>	1 mg/ml
<b>Purity</b>	≥90%
<b>Storage Stability</b>	-20°C/1 year
<b>Synonyms</b>	ZBTB40; KIAA0478; Zinc finger and BTB domain-containing protein 40
<b>Observed Band</b>	140kD
<b>Cell Pathway</b>	Nucleus .
<b>Tissue Specificity</b>	Brain,Epithelium,PCR rescued clones,Tongue,
<b>Function</b>	function:May be involved in transcriptional regulation.,PTM:Phosphorylated upon DNA damage, probably by ATM or ATR.,similarity:Belongs to the krueppel C2H2-type zinc-finger protein family.,similarity:Contains 1 BTB (POZ) domain.,similarity:Contains 12 C2H2-type zinc fingers.,
<b>Background</b>	function:May be involved in transcriptional regulation.,PTM:Phosphorylated upon DNA damage, probably by ATM or ATR.,similarity:Belongs to the krueppel C2H2-type zinc-finger protein family.,similarity:Contains 1 BTB (POZ) domain.,similarity:Contains 12 C2H2-type zinc fingers.,
<b>matters needing attention</b>	Avoid repeated freezing and thawing!
<b>Usage suggestions</b>	This product can be used in immunological reaction related experiments. For more information, please consult technical personnel.



## Products Images



Western Blot analysis of various cells using ZBTB40 Monoclonal Antibody