



## TFIIE- $\beta$ Monoclonal Antibody

<b>Catalog No</b>	YP-mAb-02105
<b>Isotype</b>	IgG
<b>Reactivity</b>	Human;Mouse
<b>Applications</b>	WB
<b>Gene Name</b>	GTF2E2
<b>Protein Name</b>	Transcription initiation factor IIE subunit beta
<b>Immunogen</b>	The antiserum was produced against synthesized peptide derived from human TF2E2. AA range:151-200
<b>Specificity</b>	TFIIE- $\beta$ Monoclonal Antibody detects endogenous levels of TFIIE- $\beta$ protein.
<b>Formulation</b>	Liquid in PBS containing 50% glycerol, 0.5% BSA and 0.02% sodium azide.
<b>Source</b>	Monoclonal, Mouse,IgG
<b>Purification</b>	The antibody was affinity-purified from mouse antiserum by affinity-chromatography using epitope-specific immunogen.
<b>Dilution</b>	WB 1:500-1:2000
<b>Concentration</b>	1 mg/ml
<b>Purity</b>	$\geq 90\%$
<b>Storage Stability</b>	-20°C/1 year
<b>Synonyms</b>	GTF2E2; TF2E2; Transcription initiation factor IIE subunit beta; TFIIE-beta; General transcription factor IIE subunit 2
<b>Observed Band</b>	33kD
<b>Cell Pathway</b>	Nucleus .
<b>Tissue Specificity</b>	Skin,
<b>Function</b>	function:Recruits TFIIH to the initiation complex and stimulates the RNA polymerase II C-terminal domain kinase and DNA-dependent ATPase activities of TFIIH. Both TFIIH and TFIIE are required for promoter clearance by RNA polymerase.,similarity:Belongs to the TFIIE beta subunit family.,similarity:Contains 1 TFIIE beta DNA-binding domain.,subunit:Tetramer of two alpha and two beta chains. Interacts with FACT subunit SUPT16H.,
<b>Background</b>	function:Recruits TFIIH to the initiation complex and stimulates the RNA polymerase II C-terminal domain kinase and DNA-dependent ATPase activities of TFIIH. Both TFIIH and TFIIE are required for promoter clearance by RNA polymerase.,similarity:Belongs to the TFIIE beta subunit family.,similarity:Contains 1 TFIIE beta DNA-binding domain.,subunit:Tetramer of two alpha and two beta chains. Interacts with FACT subunit SUPT16H.,



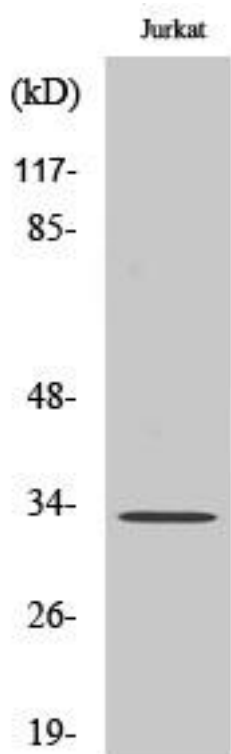
**matters needing attention**

Avoid repeated freezing and thawing!

**Usage suggestions**

This product can be used in immunological reaction related experiments. For more information, please consult technical personnel.

**Products Images**



Western Blot analysis of various cells using TFIIIE- $\beta$  Monoclonal Antibody