

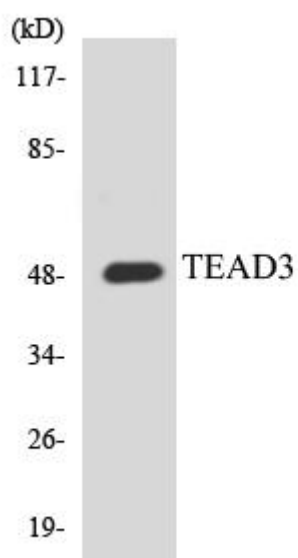


TEF-5 Monoclonal Antibody

Catalog No	YP-mAb-02097
Isotype	IgG
Reactivity	Human;Mouse
Applications	WB
Gene Name	TEAD3
Protein Name	Transcriptional enhancer factor TEF-5
Immunogen	The antiserum was produced against synthesized peptide derived from human TEAD3. AA range:211-260
Specificity	TEF-5 Monoclonal Antibody detects endogenous levels of TEF-5 protein.
Formulation	Liquid in PBS containing 50% glycerol, 0.5% BSA and 0.02% sodium azide.
Source	Monoclonal, Mouse,IgG
Purification	The antibody was affinity-purified from mouse antiserum by affinity-chromatography using epitope-specific immunogen.
Dilution	WB 1:500-1:2000
Concentration	1 mg/ml
Purity	≥90%
Storage Stability	-20°C/1 year
Synonyms	TEAD3; TEAD5; TEF5; Transcriptional enhancer factor TEF-5; DTEF-1; TEA domain family member 3; TEAD-3
Observed Band	49kD
Cell Pathway	Nucleus.
Tissue Specificity	Preferentially expressed in the placenta.
Function	function: Binds to multiple functional elements of the human chorionic somatomammotropin-B gene enhancer.,similarity: Contains 1 TEA DNA-binding domain.,tissue specificity: Preferentially expressed in the placenta.,
Background	This gene product is a member of the transcriptional enhancer factor (TEF) family of transcription factors, which contain the TEA/ATTS DNA-binding domain. It is predominantly expressed in the placenta and is involved in the transactivation of the chorionic somatomammotropin-B gene enhancer. Translation of this protein is initiated at a non-AUG (AUA) start codon. [provided by RefSeq, Jul 2008],
matters needing attention	Avoid repeated freezing and thawing!

**Usage suggestions**

This product can be used in immunological reaction related experiments. For more information, please consult technical personnel.

Products Images

Western Blot analysis of various cells using TEF-5 Monoclonal Antibody