

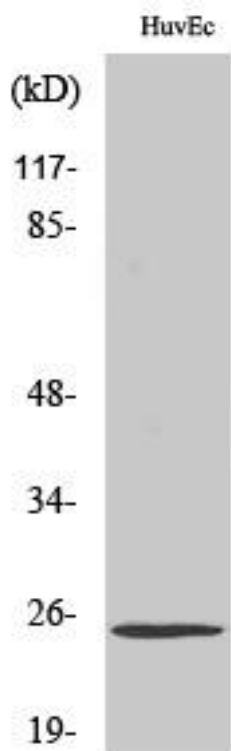


TCEAL6 Monoclonal Antibody

| | |
|----------------------------------|--|
| Catalog No | YP-mAb-02087 |
| Isotype | IgG |
| Reactivity | Human;Rat;Mouse; |
| Applications | WB |
| Gene Name | TCEAL6 |
| Protein Name | Transcription elongation factor A protein-like 6 |
| Immunogen | The antiserum was produced against synthesized peptide derived from human TCEAL6. AA range:61-110 |
| Specificity | TCEAL6 Monoclonal Antibody detects endogenous levels of TCEAL6 protein. |
| Formulation | Liquid in PBS containing 50% glycerol, 0.5% BSA and 0.02% sodium azide. |
| Source | Monoclonal, Mouse,IgG |
| Purification | The antibody was affinity-purified from mouse antiserum by affinity-chromatography using epitope-specific immunogen. |
| Dilution | WB 1:500-1:2000 |
| Concentration | 1 mg/ml |
| Purity | ≥90% |
| Storage Stability | -20°C/1 year |
| Synonyms | TCEAL6; Transcription elongation factor A protein-like 6; TCEA-like protein 6; Transcription elongation factor S-II protein-like 6 |
| Observed Band | 25kD |
| Cell Pathway | Nucleus . |
| Tissue Specificity | Brain, |
| Function | function:May be involved in transcriptional regulation.,PTM:Phosphorylated upon DNA damage, probably by ATM or ATR.,similarity:Belongs to the TFS-II family. TFA subfamily., |
| Background | function:May be involved in transcriptional regulation.,PTM:Phosphorylated upon DNA damage, probably by ATM or ATR.,similarity:Belongs to the TFS-II family. TFA subfamily., |
| matters needing attention | Avoid repeated freezing and thawing! |
| Usage suggestions | This product can be used in immunological reaction related experiments. For more information, please consult technical personnel. |



Products Images



Western Blot analysis of various cells using TCEAL6 Monoclonal Antibody