



# SRp75 Monoclonal Antibody

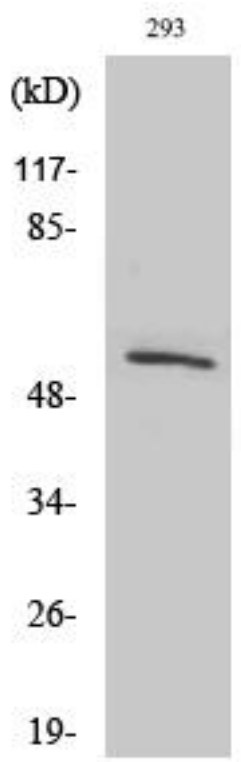
<b>Catalog No</b>	YP-mAb-02047
<b>Isotype</b>	IgG
<b>Reactivity</b>	Human;Mouse
<b>Applications</b>	WB
<b>Gene Name</b>	SRSF4
<b>Protein Name</b>	Serine/arginine-rich splicing factor 4
<b>Immunogen</b>	The antiserum was produced against synthesized peptide derived from human SFRS4. AA range:111-160
<b>Specificity</b>	SRp75 Monoclonal Antibody detects endogenous levels of SRp75 protein.
<b>Formulation</b>	Liquid in PBS containing 50% glycerol, 0.5% BSA and 0.02% sodium azide.
<b>Source</b>	Monoclonal, Mouse,IgG
<b>Purification</b>	The antibody was affinity-purified from mouse antiserum by affinity-chromatography using epitope-specific immunogen.
<b>Dilution</b>	WB 1:500-1:2000
<b>Concentration</b>	1 mg/ml
<b>Purity</b>	≥90%
<b>Storage Stability</b>	-20°C/1 year
<b>Synonyms</b>	SRSF4; SFRS4; SRP75; Serine/arginine-rich splicing factor 4; Pre-mRNA-splicing factor SRP75; SRP001LB; Splicing factor; arginine/serine-rich 4
<b>Observed Band</b>	57kD
<b>Cell Pathway</b>	Nucleus speckle .
<b>Tissue Specificity</b>	Aorta endothelial cell,Cerebrum,Epithelium,Lymph,
<b>Function</b>	function:A probable role in alternative splice site selection during pre-mRNA splicing.,PTM:Extensively phosphorylated on serine residues in the RS domain.,similarity:Belongs to the splicing factor SR family.,similarity:Contains 2 RRM (RNA recognition motif) domains.,subunit:Found in a pre-mRNA splicing complex with SFRS4, SFRS5, SNRNP70, SNRPA1, SRRM1 and SRRM2. Interacts with PNN.,
<b>Background</b>	This gene encodes a member of the arginine/serine-rich splicing factor family. The encoded protein likely functions in mRNA processing. [provided by RefSeq, Feb 2009],
<b>matters needing attention</b>	Avoid repeated freezing and thawing!



### Usage suggestions

This product can be used in immunological reaction related experiments. For more information, please consult technical personnel.

### Products Images



Western Blot analysis of various cells using SRp75 Monoclonal Antibody