

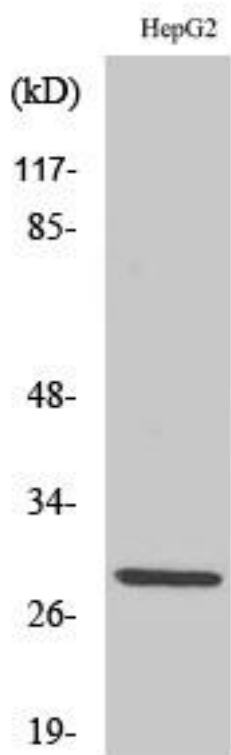


Spi-C Monoclonal Antibody

Catalog No	YP-mAb-02036
Isotype	IgG
Reactivity	Human;Rat;Mouse;
Applications	WB
Gene Name	SPIC
Protein Name	Transcription factor Spi-C
Immunogen	The antiserum was produced against synthesized peptide derived from human SPIC. AA range:131-180
Specificity	Spi-C Monoclonal Antibody detects endogenous levels of Spi-C protein.
Formulation	Liquid in PBS containing 50% glycerol, 0.5% BSA and 0.02% sodium azide.
Source	Monoclonal, Mouse,IgG
Purification	The antibody was affinity-purified from mouse antiserum by affinity-chromatography using epitope-specific immunogen.
Dilution	WB 1:500-1:2000
Concentration	1 mg/ml
Purity	≥90%
Storage Stability	-20°C/1 year
Synonyms	SPIC; Transcription factor Spi-C
Observed Band	29kD
Cell Pathway	Nucleus .
Tissue Specificity	Preferentially detected in fetal and adult spleen, lymph nodes and at lower levels in bone marrow and fetal liver.
Function	function:Probable transcription factor that binds to the PU-box, a purine-rich DNA sequence (5'-GAGGA[AT]-3') that can act as a lymphoid-specific enhancer.,similarity:Belongs to the ETS family.,similarity:Contains 1 ETS DNA-binding domain.,subunit:Binds DNA as a monomer.,tissue specificity:Preferentially detected in fetal and adult spleen, lymph nodes and at lower levels in bone marrow and fetal liver.,
Background	The protein encoded by this gene regulates the development of red pulp macrophages, which are necessary for iron homeostasis and the recycling of red blood cells. [provided by RefSeq, Aug 2016],
matters needing attention	Avoid repeated freezing and thawing!

**Usage suggestions**

This product can be used in immunological reaction related experiments. For more information, please consult technical personnel.

Products Images

Western Blot analysis of various cells using Spi-C Monoclonal Antibody