

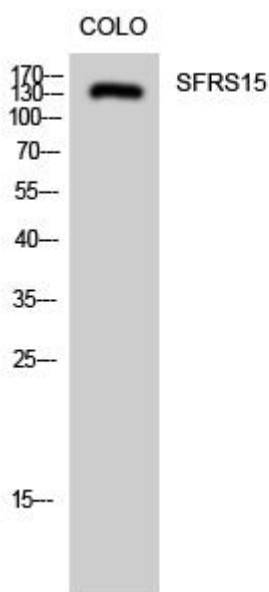


SFRS15 Monoclonal Antibody

| | |
|----------------------------------|--|
| Catalog No | YP-mAb-02011 |
| Isotype | IgG |
| Reactivity | Human;Mouse;Rat |
| Applications | WB |
| Gene Name | SCAF4 |
| Protein Name | Splicing factor arginine/serine-rich 15 |
| Immunogen | The antiserum was produced against synthesized peptide derived from human SFRS15. AA range:601-650 |
| Specificity | SFRS15 Monoclonal Antibody detects endogenous levels of SFRS15 protein. |
| Formulation | Liquid in PBS containing 50% glycerol, 0.5% BSA and 0.02% sodium azide. |
| Source | Monoclonal, Mouse,IgG |
| Purification | The antibody was affinity-purified from mouse antiserum by affinity-chromatography using epitope-specific immunogen. |
| Dilution | WB 1:500-1:2000 |
| Concentration | 1 mg/ml |
| Purity | ≥90% |
| Storage Stability | -20°C/1 year |
| Synonyms | SCAF4; KIAA1172; SFRS15; Splicing factor; arginine/serine-rich 15; CTD-binding SR-like protein RA4; SR-related and CTD-associated factor 4 |
| Observed Band | 140kD |
| Cell Pathway | Nucleus . |
| Tissue Specificity | Brain,Epithelium,Melanoma,Pancreas,Testis,Uterus, |
| Function | function:May act to physically and functionally link transcription and pre-mRNA processing.,similarity:Belongs to the splicing factor SR family.,similarity:Contains 1 CID domain.,similarity:Contains 1 RRM (RNA recognition motif) domain.,subunit:Interacts with the repetitive C-terminal domain (CTD) of RNA polymerase II., |
| Background | This gene likely encodes a member of the arginine/serine-rich splicing factor family. A similar protein in Rat appears to bind the large subunit of RNA polymerase II and provide a link between transcription and pre-mRNA splicing. Alternatively spliced transcript variants have been described. [provided by RefSeq, Feb 2009], |
| matters needing attention | Avoid repeated freezing and thawing! |

**Usage suggestions**

This product can be used in immunological reaction related experiments. For more information, please consult technical personnel.

Products Images

Western Blot analysis of various cells using SFRS15 Monoclonal Antibody