

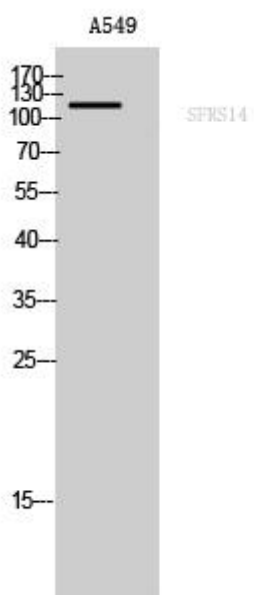


# SFRS14 Monoclonal Antibody

<b>Catalog No</b>	YP-mAb-02010
<b>Isotype</b>	IgG
<b>Reactivity</b>	Human;Rat;Mouse;
<b>Applications</b>	WB
<b>Gene Name</b>	SUGP2
<b>Protein Name</b>	SURP and G-patch domain-containing protein 2
<b>Immunogen</b>	Synthesized peptide derived from SFRS14 . at AA range: 260-340
<b>Specificity</b>	SFRS14 Monoclonal Antibody detects endogenous levels of SFRS14 protein.
<b>Formulation</b>	Liquid in PBS containing 50% glycerol, 0.5% BSA and 0.02% sodium azide.
<b>Source</b>	Monoclonal, Mouse,IgG
<b>Purification</b>	The antibody was affinity-purified from mouse antiserum by affinity-chromatography using epitope-specific immunogen.
<b>Dilution</b>	WB 1:500-1:2000
<b>Concentration</b>	1 mg/ml
<b>Purity</b>	≥90%
<b>Storage Stability</b>	-20°C/1 year
<b>Synonyms</b>	SUGP2; KIAA0365; SFRS14; SURP and G-patch domain-containing protein 2; Arginine/serine-rich-splicing factor 14; Splicing factor; arginine/serine-rich 14
<b>Observed Band</b>	120kD
<b>Cell Pathway</b>	Nucleus .
<b>Tissue Specificity</b>	Detected in adult testis, and in fetal brain and kidney.
<b>Function</b>	function:May play a role in mRNA splicing .,PTM:Phosphorylated upon DNA damage, probably by ATM or ATR.,similarity:Contains 1 G-patch domain.,similarity:Contains 2 SURP motif repeats.,tissue specificity:Detected in adult testis, and in fetal brain and kidney.,
<b>Background</b>	This gene encodes a member of the arginine/serine-rich family of splicing factors. The encoded protein functions in mRNA processing. Alternatively spliced transcript variants have been described. [provided by RefSeq, Feb 2009],
<b>matters needing attention</b>	Avoid repeated freezing and thawing!
<b>Usage suggestions</b>	This product can be used in immunological reaction related experiments. For more information, please consult technical personnel.



## Products Images



Western Blot analysis of various cells using SFRS14 Monoclonal Antibody