

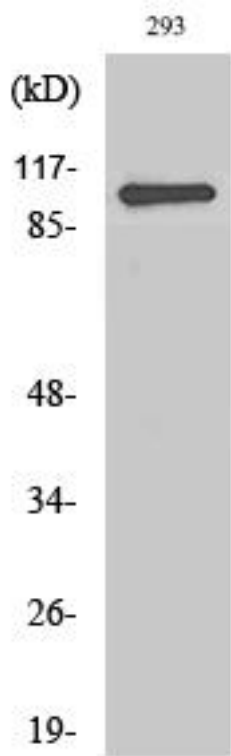


RoXaN Monoclonal Antibody

Catalog No	YP-mAb-01990
Isotype	IgG
Reactivity	Human;Rat;Mouse;
Applications	WB
Gene Name	ZC3H7B
Protein Name	Zinc finger CCCH domain-containing protein 7B
Immunogen	The antiserum was produced against synthesized peptide derived from human ZC3H7B. AA range:851-900
Specificity	RoXaN Monoclonal Antibody detects endogenous levels of RoXaN protein.
Formulation	Liquid in PBS containing 50% glycerol, 0.5% BSA and 0.02% sodium azide.
Source	Monoclonal, Mouse,IgG
Purification	The antibody was affinity-purified from mouse antiserum by affinity-chromatography using epitope-specific immunogen.
Dilution	WB 1:500-1:2000
Concentration	1 mg/ml
Purity	≥90%
Storage Stability	-20°C/1 year
Synonyms	ZC3H7B; KIAA1031; Zinc finger CCCH domain-containing protein 7B; Rotavirus 'X'-associated non-structural protein; RoXaN
Observed Band	111kD
Cell Pathway	Nucleus . Nuclear localization seems to be depleted upon rotavirus A infection.
Tissue Specificity	Brain,Lung,Trachea,Uterus,
Function	similarity:Contains 1 C2H2-type zinc finger.,similarity:Contains 3 TPR repeats.,similarity:Contains 4 C3H1-type zinc fingers.,subcellular location:Nuclear localization seems to be depleted upon rotavirus A infection.,subunit:Interacts (via LD motif) with rotavirus A NSP3 (via the coiled-coil region).,
Background	This gene encodes a protein that contains a tetratricopeptide repeat domain. The encoded protein also interacts with the rotavirus non-structural protein NSP3. [provided by RefSeq, Jul 2008],
matters needing attention	Avoid repeated freezing and thawing!
Usage suggestions	This product can be used in immunological reaction related experiments. For more information, please consult technical personnel.



Products Images



Western Blot analysis of various cells using RoXaN Monoclonal Antibody