



POLR3D Monoclonal Antibody

Catalog No	YP-mAb-01952
Isotype	IgG
Reactivity	Human;Mouse
Applications	WB
Gene Name	POLR3D
Protein Name	DNA-directed RNA polymerase III subunit RPC4
Immunogen	The antiserum was produced against synthesized peptide derived from human RPC4. AA range:281-330
Specificity	POLR3D Monoclonal Antibody detects endogenous levels of POLR3D protein.
Formulation	Liquid in PBS containing 50% glycerol, 0.5% BSA and 0.02% sodium azide.
Source	Monoclonal, Mouse,IgG
Purification	The antibody was affinity-purified from mouse antiserum by affinity-chromatography using epitope-specific immunogen.
Dilution	WB 1:500-1:2000
Concentration	1 mg/ml
Purity	≥90%
Storage Stability	-20°C/1 year
Synonyms	POLR3D; BN51; BN51T; DNA-directed RNA polymerase III subunit RPC4; RNA polymerase III subunit C4; DNA-directed RNA polymerase III subunit D; Protein BN51; RNA polymerase III 47 kDa subunit; RPC53 homolog
Observed Band	38kD
Cell Pathway	Nucleus.
Tissue Specificity	Epithelium,Lung,Lymph,
Function	function:DNA-dependent RNA polymerase catalyzes the transcription of DNA into RNA using the four ribonucleoside triphosphates as substrates. Specific peripheric component of RNA polymerase III which synthesizes small RNAs, such as 5S rRNA and tRNAs.,similarity:Belongs to the eukaryotic RPC4/POLR3D RNA polymerase subunit family.,subunit:Component of the RNA polymerase III (Pol III) complex consisting of 17 subunits (By similarity). Interacts with POLR3E/RPC5.,
Background	This gene complements a temperature-sensitive mutant isolated from the BHK-21 Syrian hamster cell line. It leads to a block in progression through the G1 phase of the cell cycle at nonpermissive temperatures. [provided by RefSeq, Jul 2008],



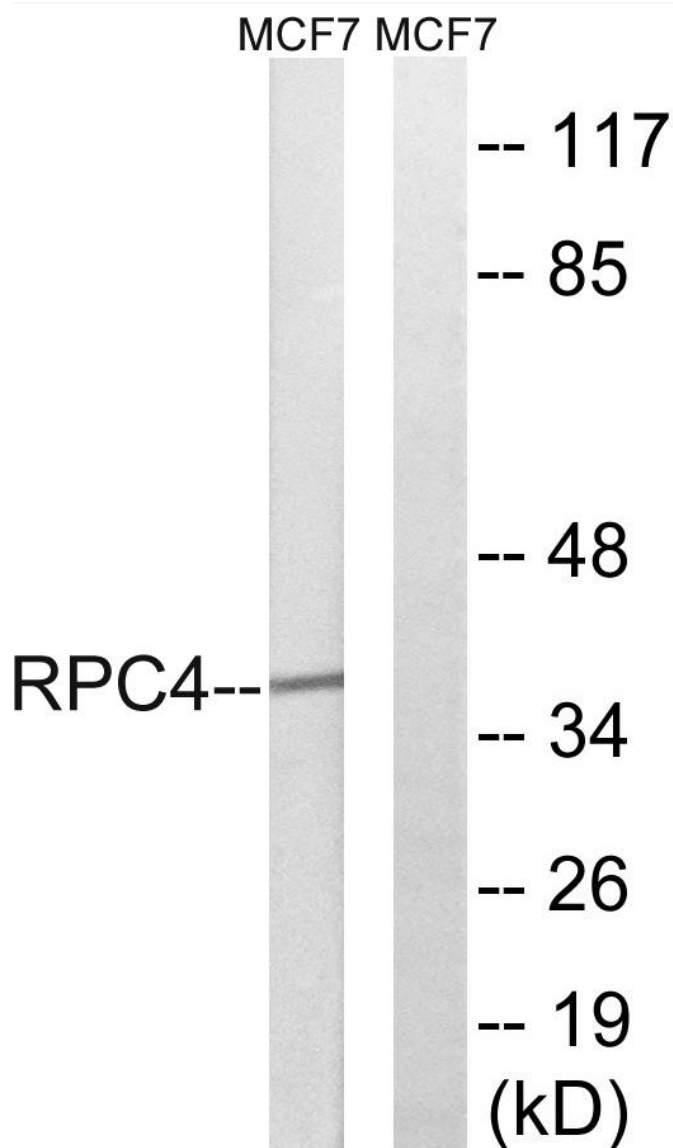
matters needing attention

Avoid repeated freezing and thawing!

Usage suggestions

This product can be used in immunological reaction related experiments. For more information, please consult technical personnel.

Products Images



Western Blot analysis of various cells using POLR3D Monoclonal Antibody