



POLR3C Monoclonal Antibody

Catalog No	YP-mAb-01951
Isotype	IgG
Reactivity	Human;Rat;Mouse;
Applications	WB
Gene Name	POLR3C
Protein Name	DNA-directed RNA polymerase III subunit RPC3
Immunogen	The antiserum was produced against synthesized peptide derived from human RPC3. AA range:191-240
Specificity	POLR3C Monoclonal Antibody detects endogenous levels of POLR3C protein.
Formulation	Liquid in PBS containing 50% glycerol, 0.5% BSA and 0.02% sodium azide.
Source	Monoclonal, Mouse,IgG
Purification	The antibody was affinity-purified from mouse antiserum by affinity-chromatography using epitope-specific immunogen.
Dilution	WB 1:500-1:2000
Concentration	1 mg/ml
Purity	≥90%
Storage Stability	-20°C/1 year
Synonyms	POLR3C; DNA-directed RNA polymerase III subunit RPC3; RNA polymerase III subunit C3; DNA-directed RNA polymerase III subunit C; RNA polymerase III 62 kDa subunit; RPC62
Observed Band	60kD
Cell Pathway	Nucleus .
Tissue Specificity	Cervix carcinoma,Lung,Ovary,
Function	disease:Antibodies against POLR3C were found in the sera of patients with systemic sclerosis (SSc).,function:DNA-dependent RNA polymerase catalyzes the transcription of DNA into RNA using the four ribonucleoside triphosphates as substrates. Specific core component of RNA polymerase III which synthesizes small RNAs, such as 5S rRNA and tRNAs. May direct with other members of the subcomplex RNA Pol III binding to the TFIIIB-DNA complex via the interactions between TFIIIB and POLR3F. May be involved either in the recruitment and stabilization of the subcomplex within RNA polymerase III, or in stimulating catalytic functions of other subunits during initiation.,similarity:Belongs to the eukaryotic RPC3/POLR3C RNA polymerase subunit family.,subunit:Component of the RNA polymerase III (Pol III) complex consisting of 17 subunits (By similarity). RPC3/POLR3C, RPC6/POLR3F and RPC7/POLR3G form a P



Background

disease:Antibodies against POLR3C were found in the sera of patients with systemic sclerosis (SSc).,function:DNA-dependent RNA polymerase catalyzes the transcription of DNA into RNA using the four ribonucleoside triphosphates as substrates. Specific core component of RNA polymerase III which synthesizes small RNAs, such as 5S rRNA and tRNAs. May direct with other members of the subcomplex RNA Pol III binding to the TFIIIB-DNA complex via the interactions between TFIIIB and POLR3F. May be involved either in the recruitment and stabilization of the subcomplex within RNA polymerase III, or in stimulating catalytic functions of other subunits during initiation.,similarity:Belongs to the eukaryotic RPC3/POLR3C RNA polymerase subunit family.,subunit:Component of the RNA polymerase III (Pol III) complex consisting of 17 subunits (By similarity). RPC3/POLR3C, RPC6/POLR3F and RPC7/POLR3G form a Pol III subcomplex. Interacts with GTF3C4.,

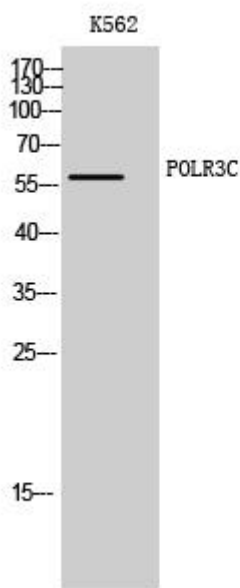
matters needing attention

Avoid repeated freezing and thawing!

Usage suggestions

This product can be used in immunological reaction related experiments. For more information, please consult technical personnel.

Products Images



Western Blot analysis of various cells using POLR3C Monoclonal Antibody