



# PJA2 Monoclonal Antibody

<b>Catalog No</b>	YP-mAb-01942
<b>Isotype</b>	IgG
<b>Reactivity</b>	Human;Rat;Mouse;
<b>Applications</b>	WB
<b>Gene Name</b>	PJA2
<b>Protein Name</b>	E3 ubiquitin-protein ligase Praja-2
<b>Immunogen</b>	The antiserum was produced against synthesized peptide derived from human PJA2. AA range:141-190
<b>Specificity</b>	PJA2 Monoclonal Antibody detects endogenous levels of PJA2 protein.
<b>Formulation</b>	Liquid in PBS containing 50% glycerol, 0.5% BSA and 0.02% sodium azide.
<b>Source</b>	Monoclonal, Mouse,IgG
<b>Purification</b>	The antibody was affinity-purified from mouse antiserum by affinity-chromatography using epitope-specific immunogen.
<b>Dilution</b>	WB 1:500-1:2000
<b>Concentration</b>	1 mg/ml
<b>Purity</b>	≥90%
<b>Storage Stability</b>	-20°C/1 year
<b>Synonyms</b>	PJA2; KIAA0438; RNF131; E3 ubiquitin-protein ligase Praja-2; Praja2; RING finger protein 131
<b>Observed Band</b>	85kD
<b>Cell Pathway</b>	Cytoplasm . Cell membrane . Endoplasmic reticulum membrane ; Peripheral membrane protein . Golgi apparatus membrane ; Peripheral membrane protein . Cell junction, synapse . Cell junction, synapse, postsynaptic density . Localizes at the cytoplasmic side of endoplasmic reticulum and Golgi apparatus. Expressed in the postsynaptic density region of synapses (By similarity). Colocalizes with PRKAR2A and PRKAR2B in the cytoplasm and the cell membrane. .
<b>Tissue Specificity</b>	Brain,Embryonic kidney,Epithelium,Liver,
<b>Function</b>	function:Has E2-dependent E3 ubiquitin-protein ligase activity.,pathway:Protein modification; protein ubiquitination.,similarity:Contains 1 RING-type zinc finger.,subcellular location:Localizes at the cytoplasmic side of endoplasmic reticulum and Golgi apparatus. Expressed in the postsynaptic density region of synapses.,subunit:Binds ubiquitin-conjugating enzymes (E2s). In vitro, interacts with the ubiquitin-conjugating enzyme, UBE2D2.,
<b>Background</b>	function:Has E2-dependent E3 ubiquitin-protein ligase activity.,pathway:Protein modification; protein ubiquitination.,similarity:Contains 1 RING-type zinc finger.,subcellular location:Localizes at the cytoplasmic side of endoplasmic



reticulum and Golgi apparatus. Expressed in the postsynaptic density region of synapses.,subunit: Binds ubiquitin-conjugating enzymes (E2s). In vitro, interacts with the ubiquitin-conjugating enzyme, UBE2D2.,

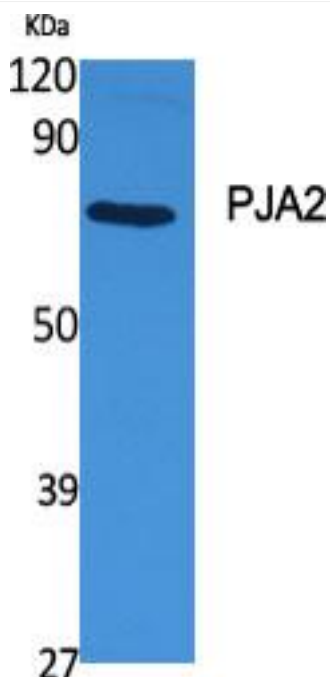
**matters needing attention**

Avoid repeated freezing and thawing!

**Usage suggestions**

This product can be used in immunological reaction related experiments. For more information, please consult technical personnel.

**Products Images**



Western Blot analysis of various cells using PJA2 Monoclonal Antibody