



PHF1 Monoclonal Antibody

Catalog No	YP-mAb-01939
Isotype	IgG
Reactivity	Human;Mouse;Rat
Applications	WB
Gene Name	PHF1
Protein Name	PHD finger protein 1
Immunogen	The antiserum was produced against synthesized peptide derived from human PHF1. AA range:345-394
Specificity	PHF1 Monoclonal Antibody detects endogenous levels of PHF1 protein.
Formulation	Liquid in PBS containing 50% glycerol, 0.5% BSA and 0.02% sodium azide.
Source	Monoclonal, Mouse,IgG
Purification	The antibody was affinity-purified from mouse antiserum by affinity-chromatography using epitope-specific immunogen.
Dilution	WB 1:500-1:2000
Concentration	1 mg/ml
Purity	≥90%
Storage Stability	-20°C/1 year
Synonyms	PHF1; PCL1; PHD finger protein 1; Protein PHF1; Polycomb-like protein 1; hPCL1
Observed Band	62kD
Cell Pathway	Nucleus. Cytoplasm, cytoskeleton, microtubule organizing center, centrosome. Localizes specifically to the promoters of numerous target genes. Localizes to double-strand breaks (DSBs) sites following DNA damage. Co-localizes with NEK6 in the centrosome.
Tissue Specificity	Highest levels in heart, skeletal muscle, and pancreas, lower levels in brain, placenta, lung, liver and kidney.
Function	function:Transcriptional repressor. May promote methylation of histone H3 on 'Lys-27' by the PRC2/EED-EZH2 complex.,similarity:Contains 2 PHD-type zinc fingers.,subcellular location:Localizes specifically to the promoters of numerous target genes.,subunit:Interacts with CHMP1 (By similarity). Interacts with the PRC2 complex.,tissue specificity:Highest levels in heart, skeletal muscle, and pancreas, lower levels in brain, placenta, lung, liver and kidney.,
Background	This gene encodes a Polycomb group protein. The protein is a component of a histone H3 lysine-27 (H3K27)-specific methyltransferase complex, and functions in transcriptional repression of homeotic genes. The protein is also recruited to double-strand breaks, and reduced protein levels results in X-ray sensitivity and increased homologous recombination. Multiple transcript variants encoding different isoforms have been found for this gene. [provided by RefSeq, May 2009],



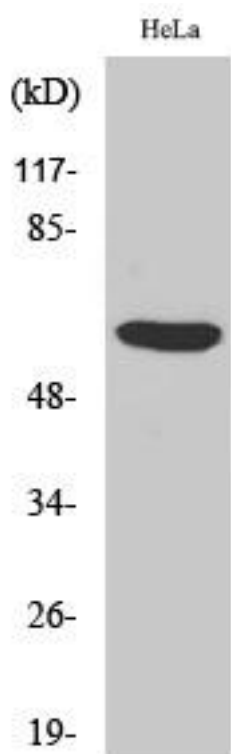
matters needing attention

Avoid repeated freezing and thawing!

Usage suggestions

This product can be used in immunological reaction related experiments. For more information, please consult technical personnel.

Products Images



Western Blot analysis of various cells using PHF1 Monoclonal Antibody