



# NRF-1 Monoclonal Antibody

<b>Catalog No</b>	YP-mAb-01915
<b>Isotype</b>	IgG
<b>Reactivity</b>	Human;Mouse;Rat;Bovine
<b>Applications</b>	WB
<b>Gene Name</b>	NRF1
<b>Protein Name</b>	Nuclear respiratory factor 1
<b>Immunogen</b>	The antiserum was produced against synthesized peptide derived from human NRF1. AA range:221-270
<b>Specificity</b>	NRF-1 Monoclonal Antibody detects endogenous levels of NRF-1 protein.
<b>Formulation</b>	Liquid in PBS containing 50% glycerol, 0.5% BSA and 0.02% sodium azide.
<b>Source</b>	Monoclonal, Mouse,IgG
<b>Purification</b>	The antibody was affinity-purified from mouse antiserum by affinity-chromatography using epitope-specific immunogen.
<b>Dilution</b>	WB 1:500-1:2000
<b>Concentration</b>	1 mg/ml
<b>Purity</b>	≥90%
<b>Storage Stability</b>	-20°C/1 year
<b>Synonyms</b>	NRF1; Nuclear respiratory factor 1; NRF-1; Alpha palindromic-binding protein; Alpha-pal
<b>Observed Band</b>	54kD
<b>Cell Pathway</b>	Nucleus.
<b>Tissue Specificity</b>	Ubiquitously expressed with strongest expression in skeletal muscle.
<b>Function</b>	function:Transcription factor that activates the expression of the EIF2S1 (EIF2-alpha) gene. Links the transcriptional modulation of key metabolic genes to cellular growth and development. Implicated in the control of nuclear genes required for respiration, heme biosynthesis, and mitochondrial DNA transcription and replication.,PTM:Phosphorylation enhances DNA binding.,similarity:Belongs to the NRF1/Ewg family.,subunit:Homodimer. Binds DNA as a dimer. Interacts with PPRC1.,tissue specificity:Ubiquitously expressed with strongest expression in skeletal muscle.,
<b>Background</b>	This gene encodes a protein that homodimerizes and functions as a transcription factor which activates the expression of some key metabolic genes regulating cellular growth and nuclear genes required for respiration, heme biosynthesis, and mitochondrial DNA transcription and replication. The protein has also been associated with the regulation of neurite outgrowth. Alternative splicing results in multiple transcript variants. Confusion has occurred in bibliographic databases

due to the shared symbol of NRF1 for this gene and for "nuclear factor (erythroid-derived 2)-like 1" which has an official symbol of NFE2L1. [provided by RefSeq, May 2014],

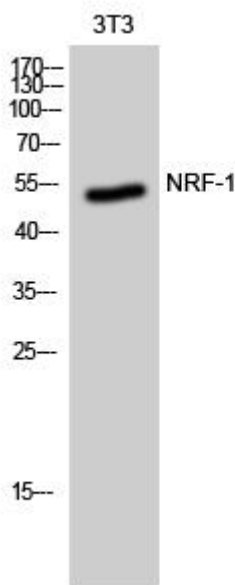
**matters needing attention**

Avoid repeated freezing and thawing!

**Usage suggestions**

This product can be used in immunological reaction related experiments. For more information, please consult technical personnel.

## Products Images



Western Blot analysis of various cells using NRF-1 Monoclonal Antibody