



NFR κ B Monoclonal Antibody

| | |
|---------------------------|--|
| Catalog No | YP-mAb-01900 |
| Isotype | IgG |
| Reactivity | Human;Mouse;Monkey |
| Applications | WB |
| Gene Name | NFRKB |
| Protein Name | Nuclear factor related to kappa-B-binding protein |
| Immunogen | The antiserum was produced against synthesized peptide derived from human NFRKB. AA range:463-512 |
| Specificity | NFR κ B Monoclonal Antibody detects endogenous levels of NFR κ B protein. |
| Formulation | Liquid in PBS containing 50% glycerol, 0.5% BSA and 0.02% sodium azide. |
| Source | Monoclonal, Mouse,IgG |
| Purification | The antibody was affinity-purified from mouse antiserum by affinity-chromatography using epitope-specific immunogen. |
| Dilution | WB 1:500-1:2000 |
| Concentration | 1 mg/ml |
| Purity | ≥90% |
| Storage Stability | -20°C/1 year |
| Synonyms | NFRKB; INO80G; Nuclear factor related to kappa-B-binding protein; DNA-binding protein R kappa-B; INO80 complex subunit G |
| Observed Band | 110kD |
| Cell Pathway | Nucleus . |
| Tissue Specificity | Expressed in thymus, brain, testes, spleen and liver. |
| Function | function:Binds to the DNA consensus sequence 5'-GGGGAATCTCC-3'.PTM:Phosphorylated upon DNA damage, probably by ATM or ATR.,subunit:Component of the chromatin-remodeling INO80 complex, at least composed of ACTL6A, ACTR5, ACTR8, RVBL1, RVBL2, INO80, INO80B, INO80C, INO80D and INO80E.,tissue specificity:Expressed in thymus, brain, testes, spleen and liver., |
| Background | function:Binds to the DNA consensus sequence 5'-GGGGAATCTCC-3'.PTM:Phosphorylated upon DNA damage, probably by ATM or ATR.,subunit:Component of the chromatin-remodeling INO80 complex, at least composed of ACTL6A, ACTR5, ACTR8, RVBL1, RVBL2, INO80, INO80B, INO80C, INO80D and INO80E.,tissue specificity:Expressed in thymus, brain, testes, spleen and liver., |



matters needing attention

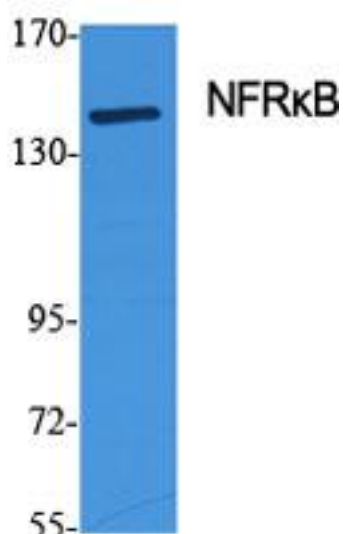
Avoid repeated freezing and thawing!

Usage suggestions

This product can be used in immunological reaction related experiments. For more information, please consult technical personnel.

Products Images

(kD)



Western Blot analysis of various cells using NFRκB Monoclonal Antibody