



# Nap1 Monoclonal Antibody

<b>Catalog No</b>	YP-mAb-01891
<b>Isotype</b>	IgG
<b>Reactivity</b>	Human;Mouse;Rat
<b>Applications</b>	WB
<b>Gene Name</b>	AZI2
<b>Protein Name</b>	5-azacytidine-induced protein 2
<b>Immunogen</b>	The antiserum was produced against synthesized peptide derived from human AZI2. AA range:10-59
<b>Specificity</b>	Nap1 Monoclonal Antibody detects endogenous levels of Nap1 protein.
<b>Formulation</b>	Liquid in PBS containing 50% glycerol, 0.5% BSA and 0.02% sodium azide.
<b>Source</b>	Monoclonal, Mouse,IgG
<b>Purification</b>	The antibody was affinity-purified from mouse antiserum by affinity-chromatography using epitope-specific immunogen.
<b>Dilution</b>	WB 1:500-1:2000
<b>Concentration</b>	1 mg/ml
<b>Purity</b>	≥90%
<b>Storage Stability</b>	-20°C/1 year
<b>Synonyms</b>	AZI2; NAP1; 5-azacytidine-induced protein 2; NF-kappa-B-activating kinase-associated protein 1; Nak-associated protein 1; TILP
<b>Observed Band</b>	48kD
<b>Cell Pathway</b>	Cytoplasm .
<b>Tissue Specificity</b>	Widely expressed (PubMed:14560022). Abundant expression seen in the pancreas and testis (PubMed:14560022).
<b>Function</b>	function:Activates serine/threonine-protein kinase TBK1 and facilitates its oligomerization. Enhances the phosphorylation of NF-kappa-B p65 subunit RELA by TBK1. Promotes TBK1-induced as well as TNF-alpha or PMA-induced activation of NF-kappa-B. Participates in IFN-beta promoter activation via TICAM1.,subunit:Interacts with IKBKE, TBK1 and TICAM1.,tissue specificity:Widely expressed. Abundant expression seen in the pancreas and testis.,
<b>Background</b>	AZI2, or NAP1, contributes to the activation of NFkB (see MIM 164011)-dependent gene expression by activating IKK-related kinases, such as NAK (TBK1; MIM 604834) (Fujita et al., 2003 [PubMed 14560022]).[supplied by OMIM, Mar 2008],



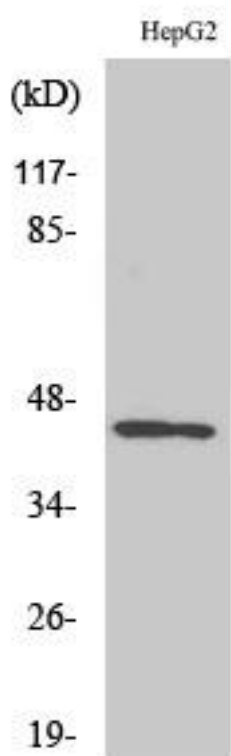
**matters needing attention**

Avoid repeated freezing and thawing!

**Usage suggestions**

This product can be used in immunological reaction related experiments. For more information, please consult technical personnel.

**Products Images**



Western Blot analysis of various cells using Nap1 Monoclonal Antibody