



# Sin3B Monoclonal Antibody

<b>Catalog No</b>	YP-mAb-01879
<b>Isotype</b>	IgG
<b>Reactivity</b>	Human;Rat;Mouse;
<b>Applications</b>	WB
<b>Gene Name</b>	SIN3B
<b>Protein Name</b>	Paired amphipathic helix protein Sin3b
<b>Immunogen</b>	The antiserum was produced against synthesized peptide derived from human SIN3B. AA range:221-270
<b>Specificity</b>	Sin3B Monoclonal Antibody detects endogenous levels of Sin3B protein.
<b>Formulation</b>	Liquid in PBS containing 50% glycerol, 0.5% BSA and 0.02% sodium azide.
<b>Source</b>	Monoclonal, Mouse,IgG
<b>Purification</b>	The antibody was affinity-purified from mouse antiserum by affinity-chromatography using epitope-specific immunogen.
<b>Dilution</b>	WB 1:500-1:2000
<b>Concentration</b>	1 mg/ml
<b>Purity</b>	≥90%
<b>Storage Stability</b>	-20°C/1 year
<b>Synonyms</b>	SIN3B; KIAA0700; Paired amphipathic helix protein Sin3b; Histone deacetylase complex subunit Sin3b; Transcriptional corepressor Sin3b
<b>Observed Band</b>	130kD
<b>Cell Pathway</b>	Nucleus .
<b>Tissue Specificity</b>	Brain,Duodenum,Lung,Skin,
<b>Function</b>	function:Acts as a transcriptional repressor. Interacts with MXI1 to repress MYC responsive genes and antagonize MYC oncogenic activities. Interacts with MAD-MAX heterodimers by binding to MAD. The heterodimer then represses transcription by tethering SIN3B to DNA. Also forms a complex with FOXK1 which represses transcription.,similarity:Contains 3 PAH (paired amphipathic helix) repeats.,subunit:Interacts with FOXK1/MNF, MXI, MAD, NCOR1 and SAP30. Interaction with SDS3 enhances the interaction with HDAC1 to form a complex. Interacts with MAD3, MAD4, MAEL, REST and SETDB1 (By similarity). Interacts with HCFC1.,
<b>Background</b>	function:Acts as a transcriptional repressor. Interacts with MXI1 to repress MYC responsive genes and antagonize MYC oncogenic activities. Interacts with MAD-MAX heterodimers by binding to MAD. The heterodimer then represses transcription by tethering SIN3B to DNA. Also forms a complex with FOXK1 which represses transcription.,similarity:Contains 3 PAH (paired amphipathic helix)



repeats.,subunit:Interacts with FOXK1/MNF, MXI, MAD, NCOR1 and SAP30. Interaction with SDS3 enhances the interaction with HDAC1 to form a complex. Interacts with MAD3, MAD4, MAEL, REST and SETDB1 (By similarity). Interacts with HCFC1.,

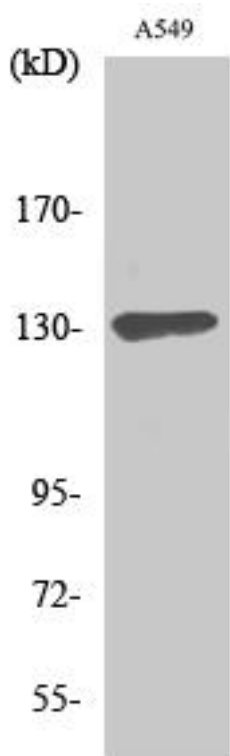
**matters needing attention**

Avoid repeated freezing and thawing!

**Usage suggestions**

This product can be used in immunological reaction related experiments. For more information, please consult technical personnel.

**Products Images**



Western Blot analysis of various cells using Sin3B Monoclonal Antibody