



# MADD Monoclonal Antibody

|                           |  |
|---------------------------|--|
| <b>Catalog No</b>         | YP-mAb-01854   |
| <b>Isotype</b>            | IgG  |
| <b>Reactivity</b>         | Human;Mouse;Rat  |
| <b>Applications</b>       | WB   |
| <b>Gene Name</b>          | MADD   |
| <b>Protein Name</b>       | MAP kinase-activating death domain protein   |
| <b>Immunogen</b>          | The antiserum was produced against synthesized peptide derived from human MADD. AA range:751-800   |
| <b>Specificity</b>        | MADD Monoclonal Antibody detects endogenous levels of MADD protein.  |
| <b>Formulation</b>        | Liquid in PBS containing 50% glycerol, 0.5% BSA and 0.02% sodium azide.  |
| <b>Source</b>             | Monoclonal, Mouse,IgG  |
| <b>Purification</b>       | The antibody was affinity-purified from mouse antiserum by affinity-chromatography using epitope-specific immunogen.   |
| <b>Dilution</b>           | WB 1:500-1:2000  |
| <b>Concentration</b>      | 1 mg/ml  |
| <b>Purity</b>             | ≥90%   |
| <b>Storage Stability</b>  | -20°C/1 year   |
| <b>Synonyms</b>           | MADD; DENN; IG20; KIAA0358; MAP kinase-activating death domain protein; Differentially expressed in normal and neoplastic cells; Insulinoma glucagonoma clone 20; Rab3 GDP/GTP exchange factor   |
| <b>Observed Band</b>      | 183kD  |
| <b>Cell Pathway</b>       | Cell membrane . Cytoplasm . Cell projection, axon .  |
| <b>Tissue Specificity</b> | Expressed in testis, ovary, brain and heart (PubMed:8988362). Expressed in spleen, thymus, prostate, testis, ovary, small intestine and colon (PubMed:9115275). Expressed in liver (PubMed:9796103). ; [Isoform 1]: Not detected in the brain, breast, kidney, lung, ovary, pancreas, testis, uterus, stomach and thyroid. ; [Isoform 2]: Expressed in the brain, breast, kidney, lung, ovary, pancreas, testis, uterus, stomach and thyroid. ; [Isoform 3]: Expressed in the brain, breast, kidney, lung, ovary, pancreas, testis, uterus, stomach and thyroid. ; [Isoform 4]: Expressed in the brain, breast, kidney, lung, ovary, pancreas, testis, uterus, stomach and thyroid. ; [Isoform 5]: Expressed in the brain, breast, kidney, lung, ovary, pancreas, testis, uterus, stomach and thyroid. ; [Isoform 6]: Not detected |
| <b>Function</b>           | caution:The sequence shown here is derived from an Ensembl automatic analysis pipeline and should be considered as preliminary data.,function:Plays a significant role in regulating cell proliferation, survival and death through alternative mRNA splicing. Isoform 5 shows increased cell proliferation and isoform 2 shows  |



decreased. Converts GDP-bound inactive form of RAB3A, RAB3C and RAB3D to the GTP-bound active forms. Component of the TNFRSF1A signaling complex: MADD links TNFRSF1A with MAP kinase activation. Plays an important regulatory role in physiological cell death (TNF-alpha-induced, caspase-mediated apoptosis); isoform 1 is susceptible to inducing apoptosis, isoform 5 is resistant and isoform 3 and isoform 4 have no effect.,miscellaneous:Overexpression of MADD activates the mitogen-activated protein (MAP) kinase extracellular signal-regulated kinase (ERK). Expression of the MADD d

#### Background

Tumor necrosis factor alpha (TNF-alpha) is a signaling molecule that interacts with one of two receptors on cells targeted for apoptosis. The apoptotic signal is transduced inside these cells by cytoplasmic adaptor proteins. The protein encoded by this gene is a death domain-containing adaptor protein that interacts with the death domain of TNF-alpha receptor 1 to activate mitogen-activated protein kinase (MAPK) and propagate the apoptotic signal. It is membrane-bound and expressed at a higher level in neoplastic cells than in normal cells. Several transcript variants encoding different isoforms have been described for this gene. [provided by RefSeq, Jul 2008],

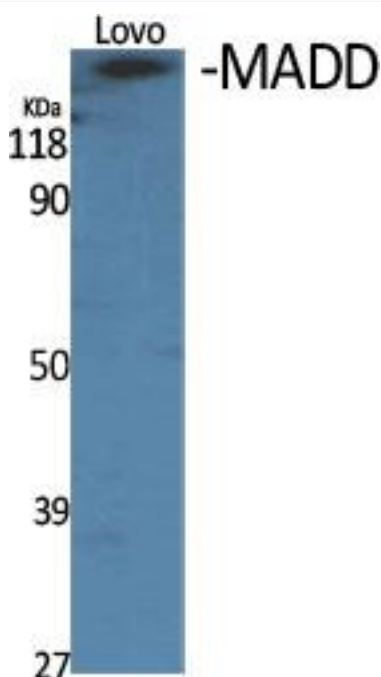
#### matters needing attention

Avoid repeated freezing and thawing!

#### Usage suggestions

This product can be used in immunological reaction related experiments. For more information, please consult technical personnel.

### Products Images



Western Blot analysis of various cells using MADD Monoclonal Antibody