

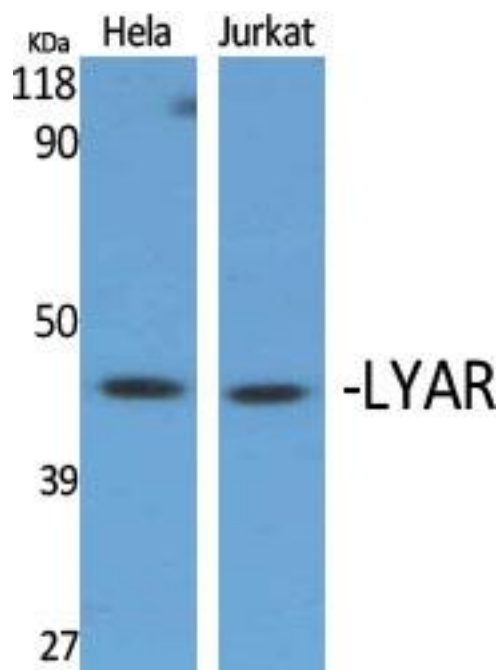


LYAR Monoclonal Antibody

Catalog No	YP-mAb-01851
Isotype	IgG
Reactivity	Human;Rat;Mouse;
Applications	WB
Gene Name	LYAR
Protein Name	Cell growth-regulating nucleolar protein
Immunogen	The antiserum was produced against synthesized peptide derived from human LYAR. AA range:241-290
Specificity	LYAR Monoclonal Antibody detects endogenous levels of LYAR protein.
Formulation	Liquid in PBS containing 50% glycerol, 0.5% BSA and 0.02% sodium azide.
Source	Monoclonal, Mouse,IgG
Purification	The antibody was affinity-purified from mouse antiserum by affinity-chromatography using epitope-specific immunogen.
Dilution	WB 1:500-1:2000
Concentration	1 mg/ml
Purity	≥90%
Storage Stability	-20°C/1 year
Synonyms	LYAR; PNAS-5; Cell growth-regulating nucleolar protein
Observed Band	44kD
Cell Pathway	Nucleus . Nucleus, nucleolus . Cytoplasm . Cell projection, cilium, photoreceptor outer segment . Component of pre-ribosomal particles, including pre-40S, pre-60S and pre-90S (PubMed:24495227). Associated with cytoplasmic ribosomes, but not polysomes, as a component of the 60S subunit (PubMed:24990247). In the retina, predominantly expressed in photoreceptor outer segments (By similarity). In the nucleolus, colocalizes with nucleolin/NCL, therefore may reside in the dense fibrillar component (DFC) (By similarity). .
Tissue Specificity	Predominantly expressed in testis.
Function	similarity:Contains 2 C2HC-type zinc fingers.,
Background	similarity:Contains 2 C2HC-type zinc fingers.,
matters needing attention	Avoid repeated freezing and thawing!

**Usage suggestions**

This product can be used in immunological reaction related experiments. For more information, please consult technical personnel.

Products Images

Western Blot analysis of various cells using LYAR Monoclonal Antibody